

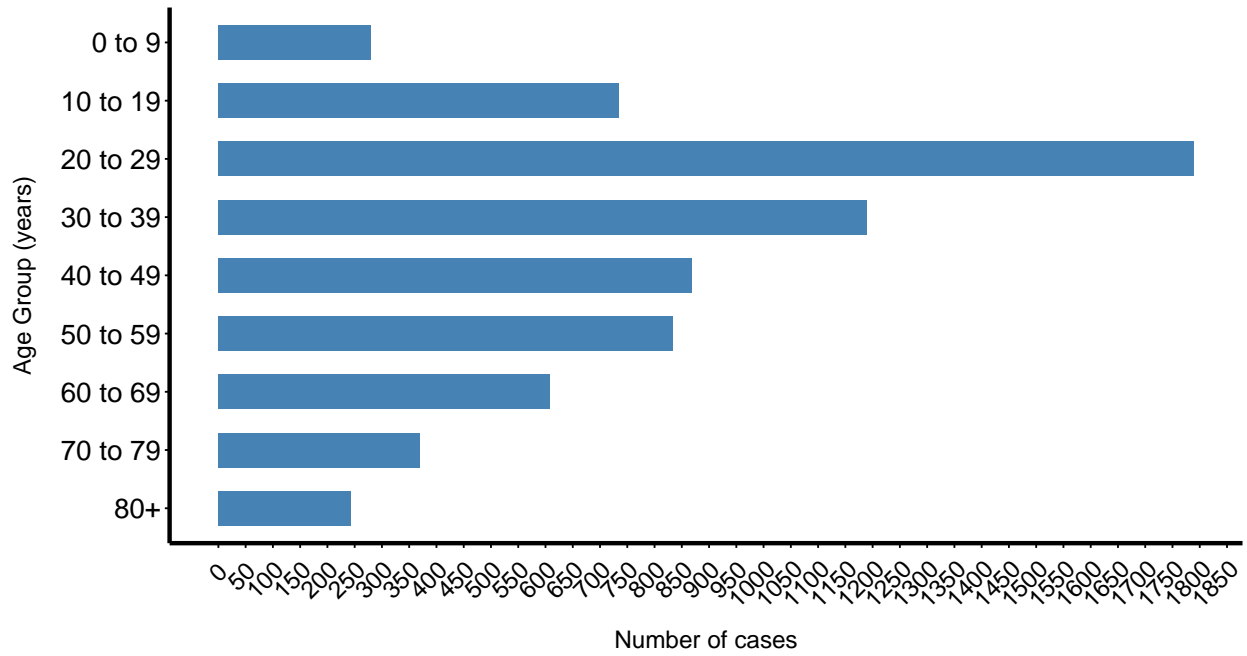
Missoula County COVID-19 Cases

Ethan Walker, University of Montana

Data as of January 11, 2021

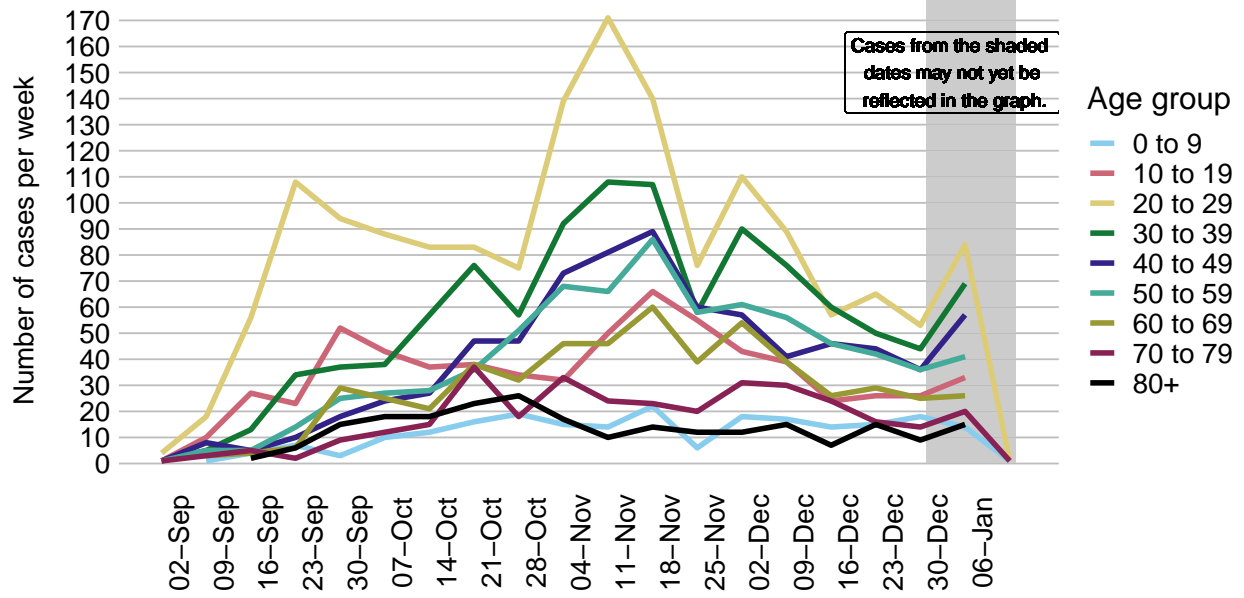
COVID-19 Cases by age group

Missoula County, since March 2020. N = 6914 cases.

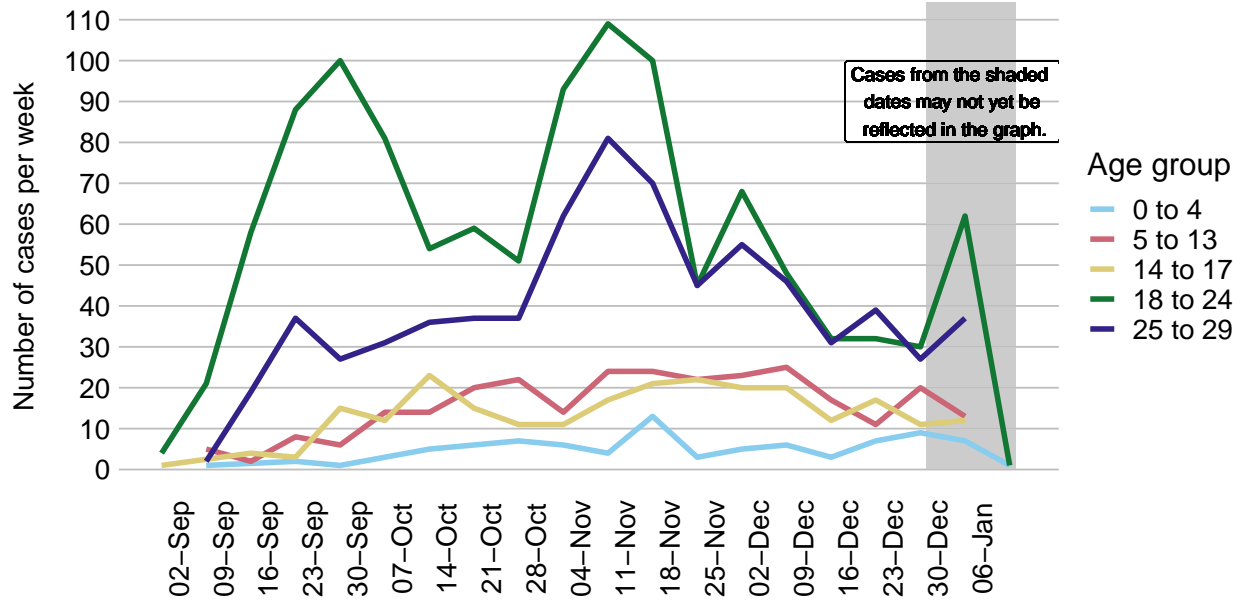


Weekly COVID-19 cases by age group

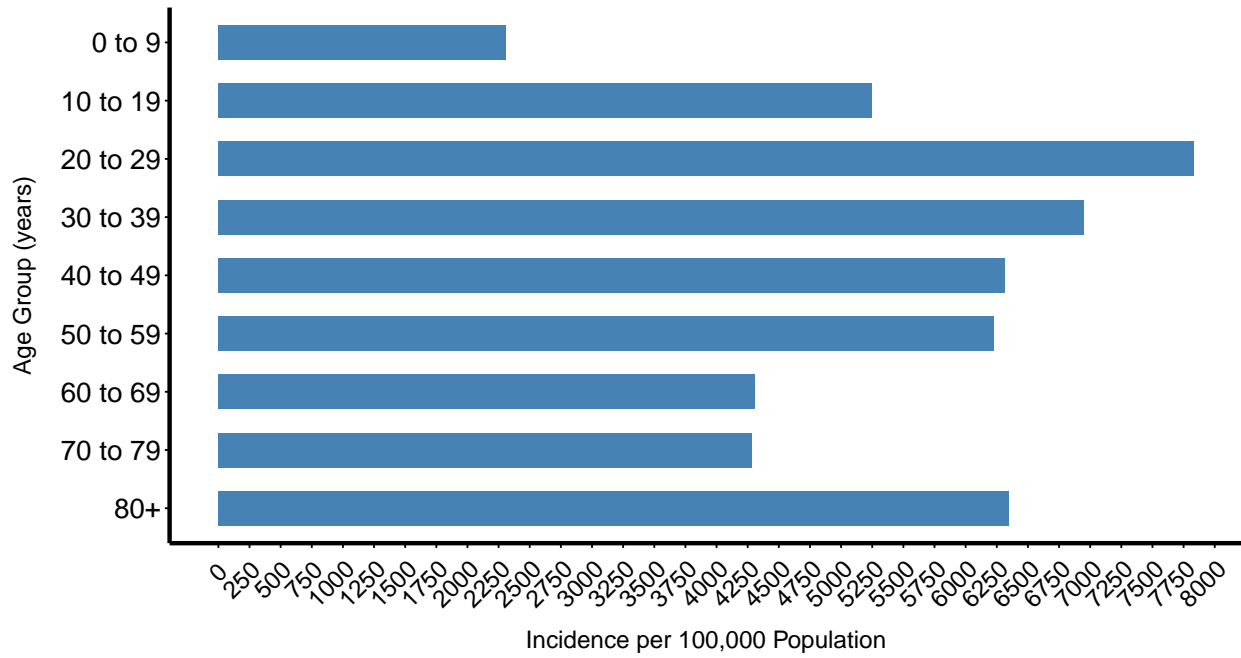
Missoula County, 2020. N = 6191 cases.



Weekly COVID-19 cases by age group
 Missoula County, 2020. N = 2476 cases.

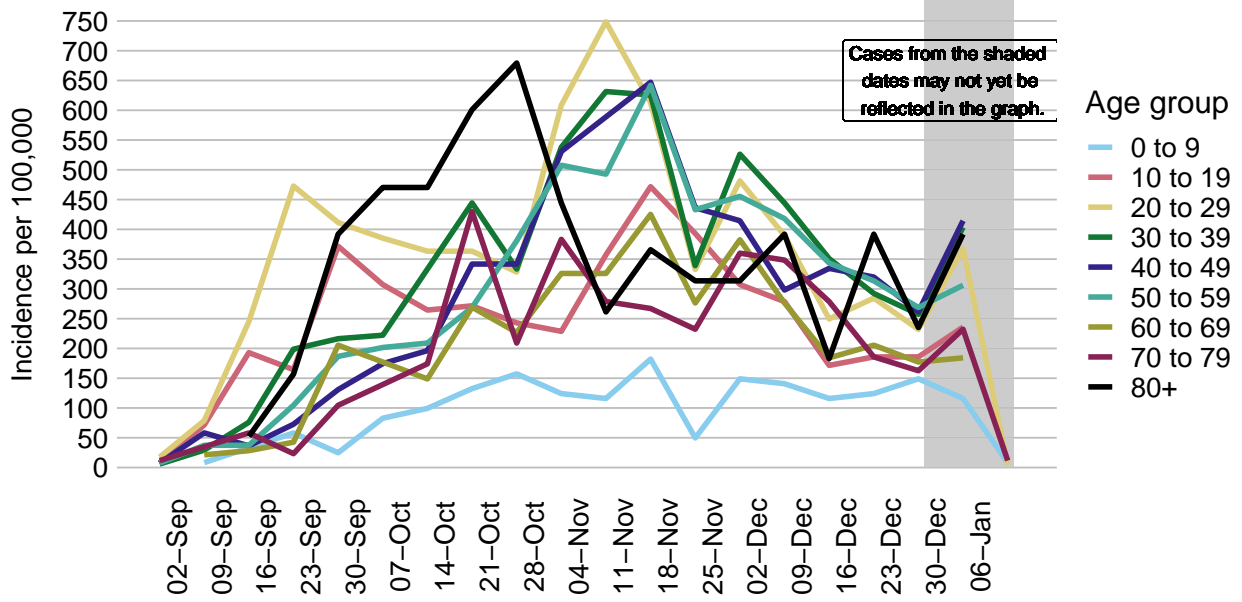


COVID-19 incidence by age group Missoula County, since March 2020. N = 6914 cases.



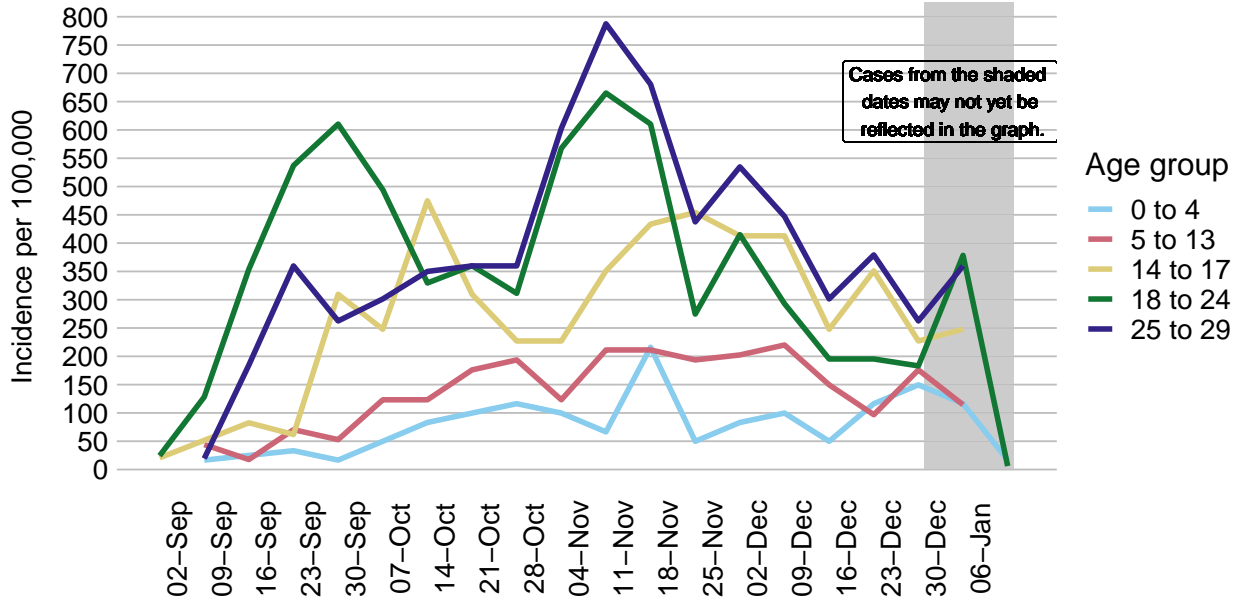
COVID-19 incidence per week by age group

Missoula County, 2020. N = 6191 cases.

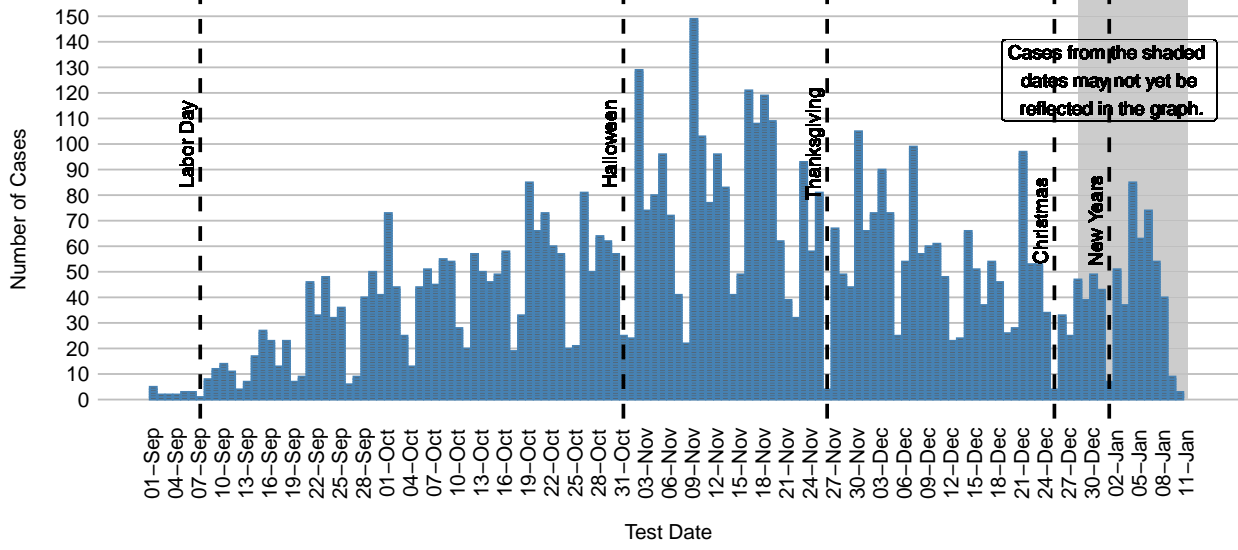


COVID-19 incidence per week by age group

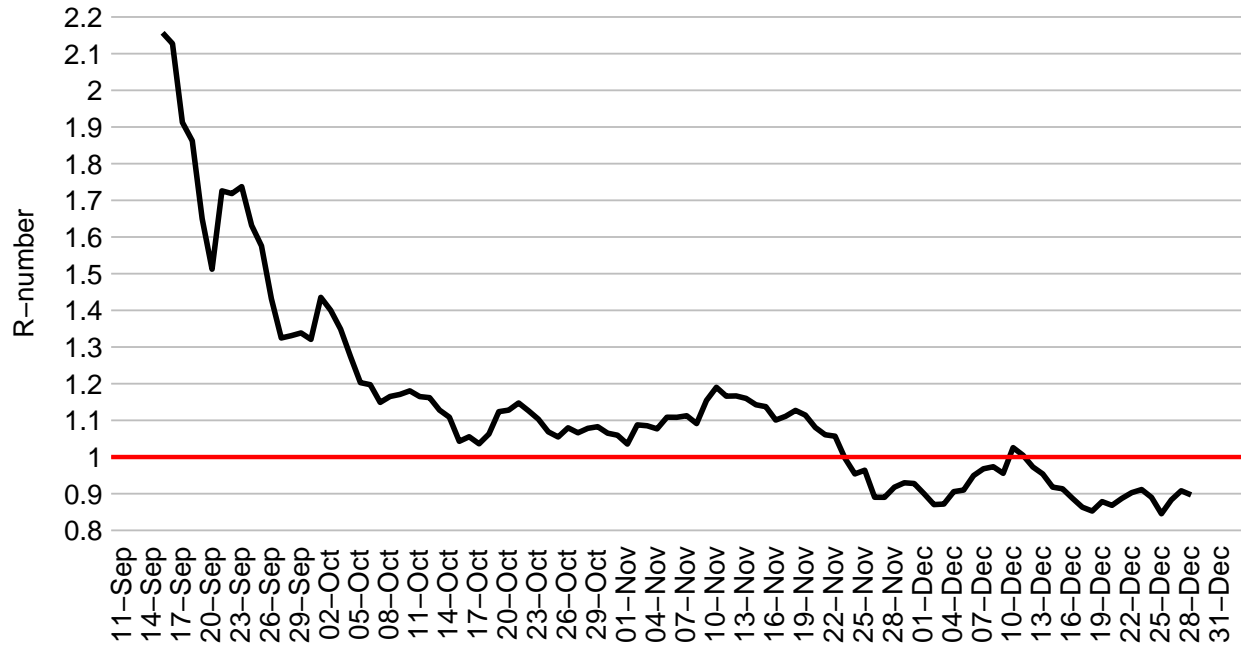
Missoula County, 2020. N = 2476 cases.



COVID-19 Cases in Missoula County Since September 1, 2020
 Cases in plot = 6207



COVID-19 Rolling 14-day R-number, Missoula County



COVID-19 Cases in Missoula County by Date, 2020

Total cases = 6927

