

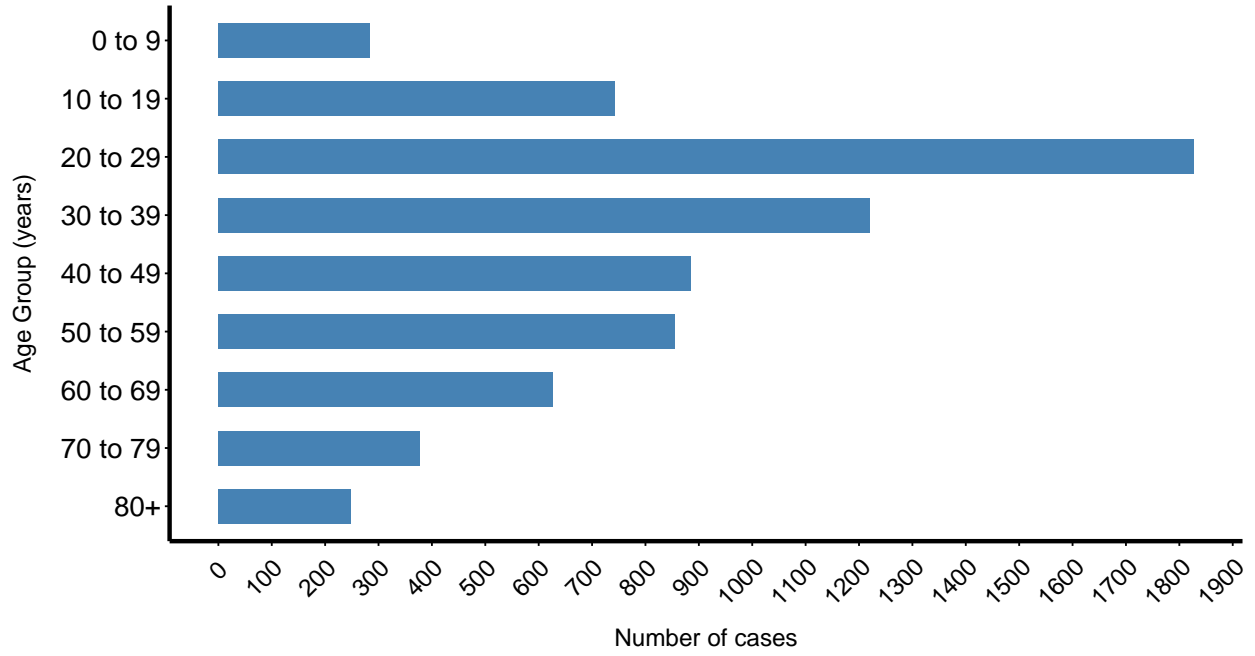
# Missoula County COVID-19 Cases

Ethan Walker, University of Montana

Data as of January 14, 2021

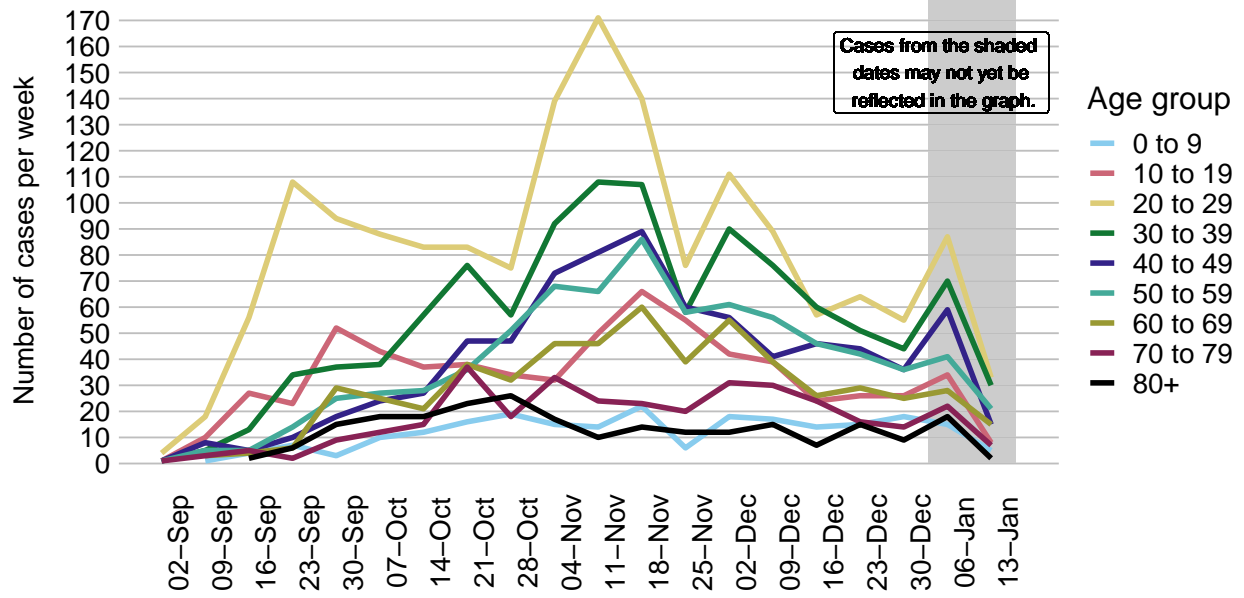
# COVID-19 Cases by age group

Missoula County, since March 2020. N = 7068 cases.

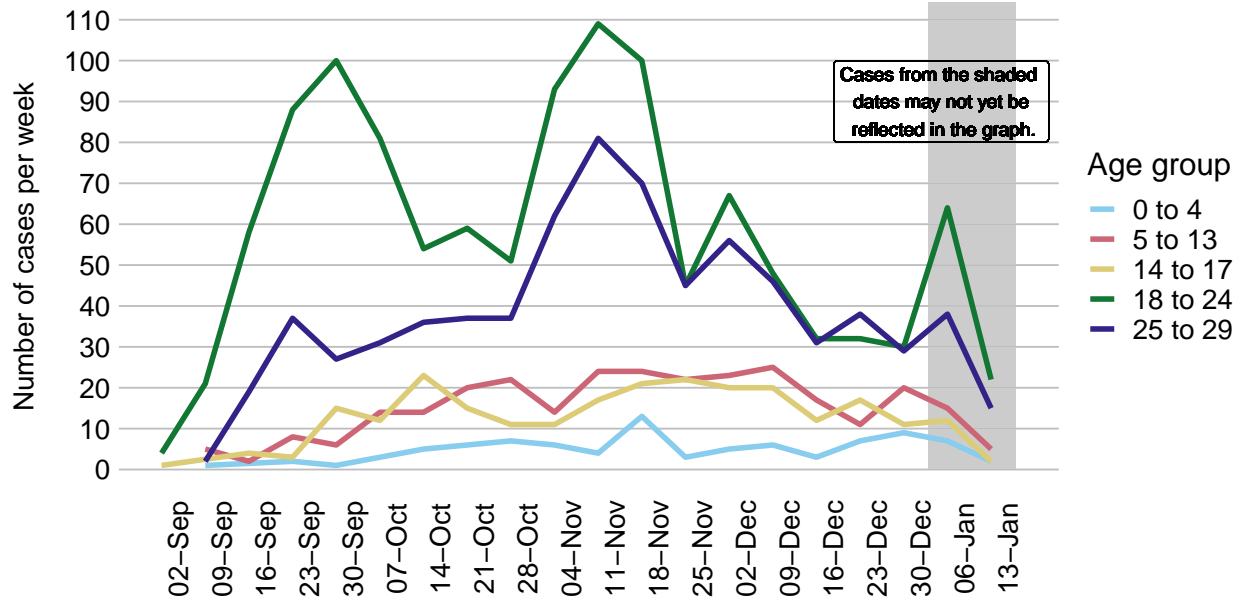


# Weekly COVID-19 cases by age group

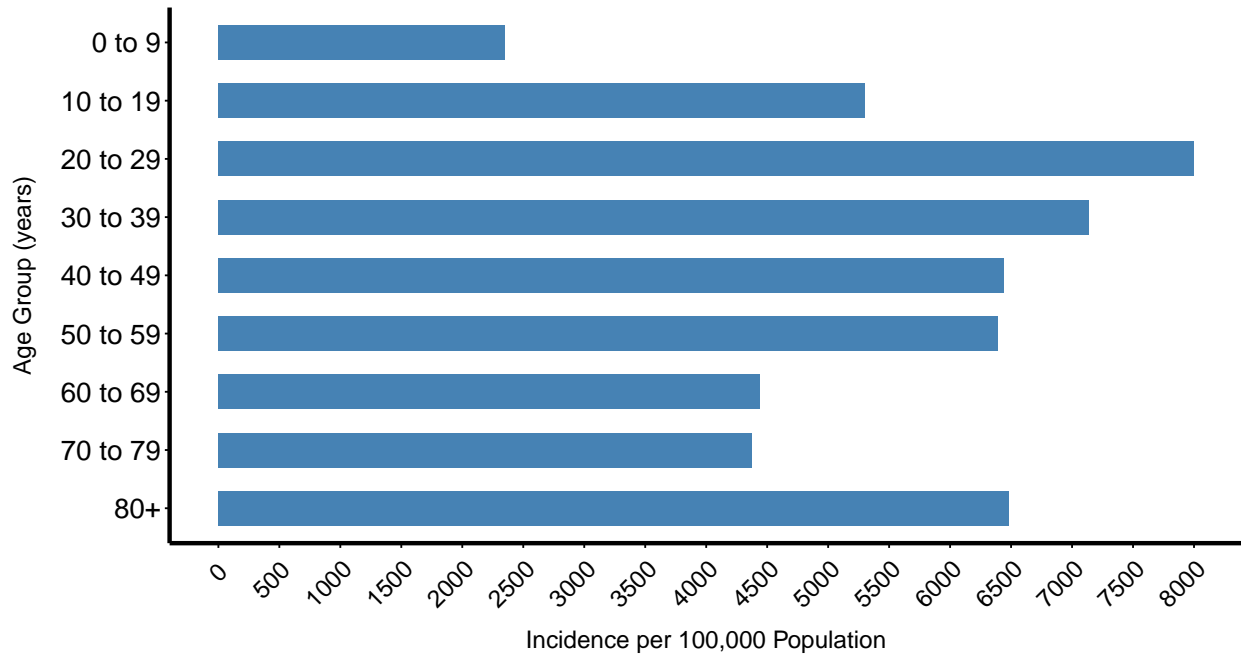
Missoula County, 2020. N = 6345 cases.



Weekly COVID-19 cases by age group  
 Missoula County, 2020. N = 2527 cases.

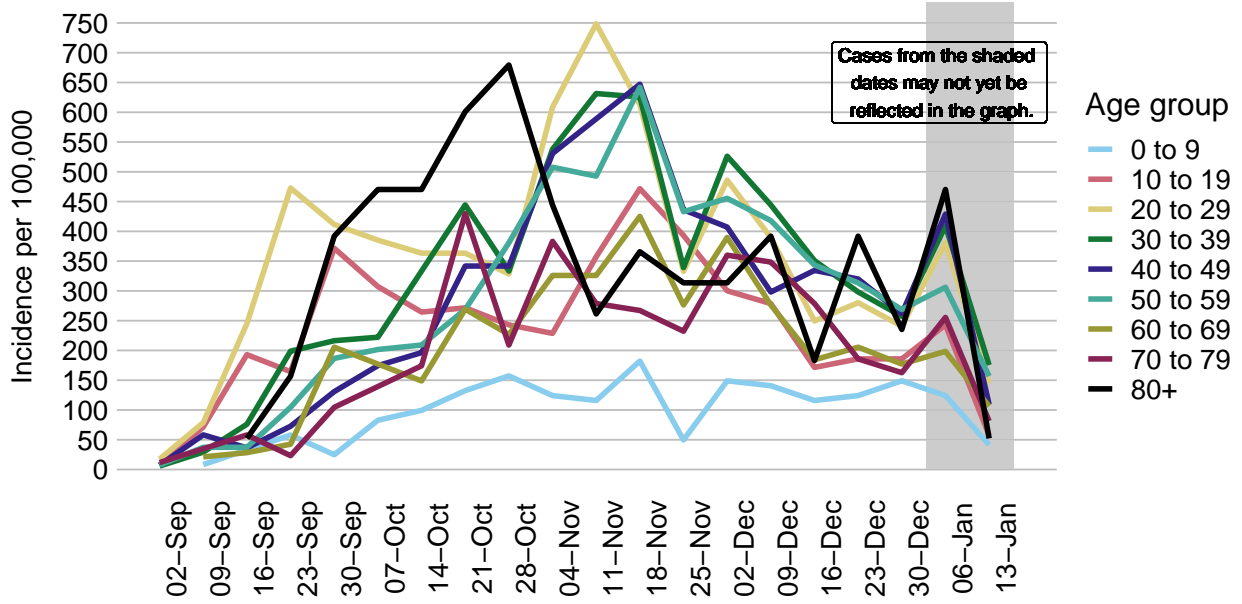


COVID-19 incidence by age group  
Missoula County, since March 2020. N = 7068 cases.



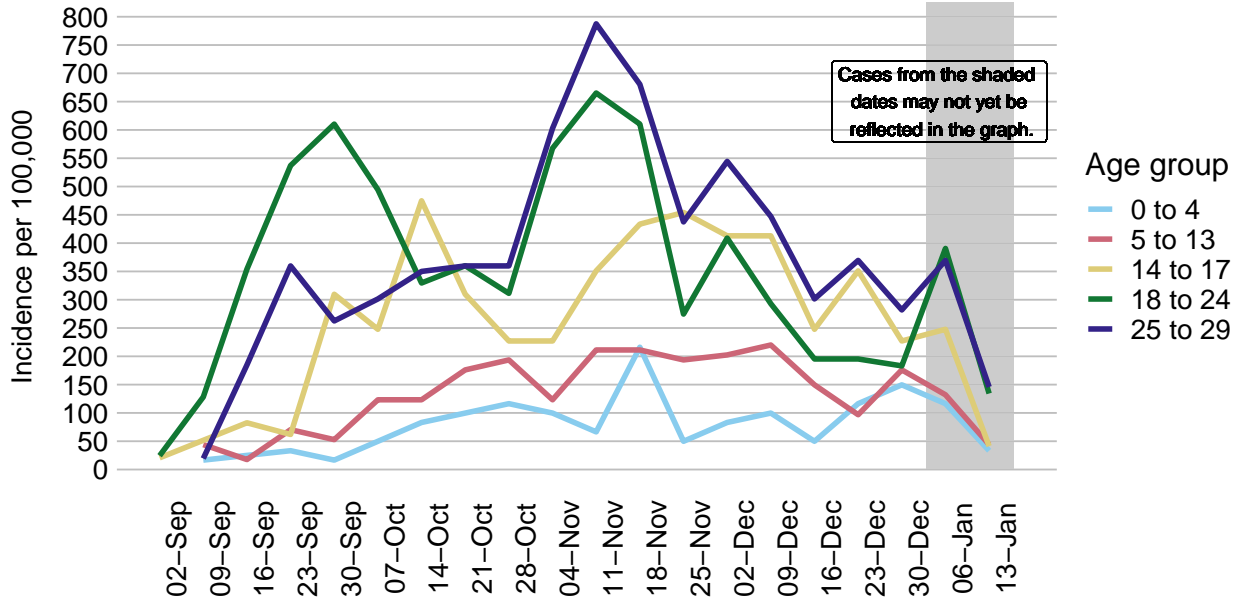
# COVID-19 incidence per week by age group

Missoula County, 2020. N = 6345 cases.

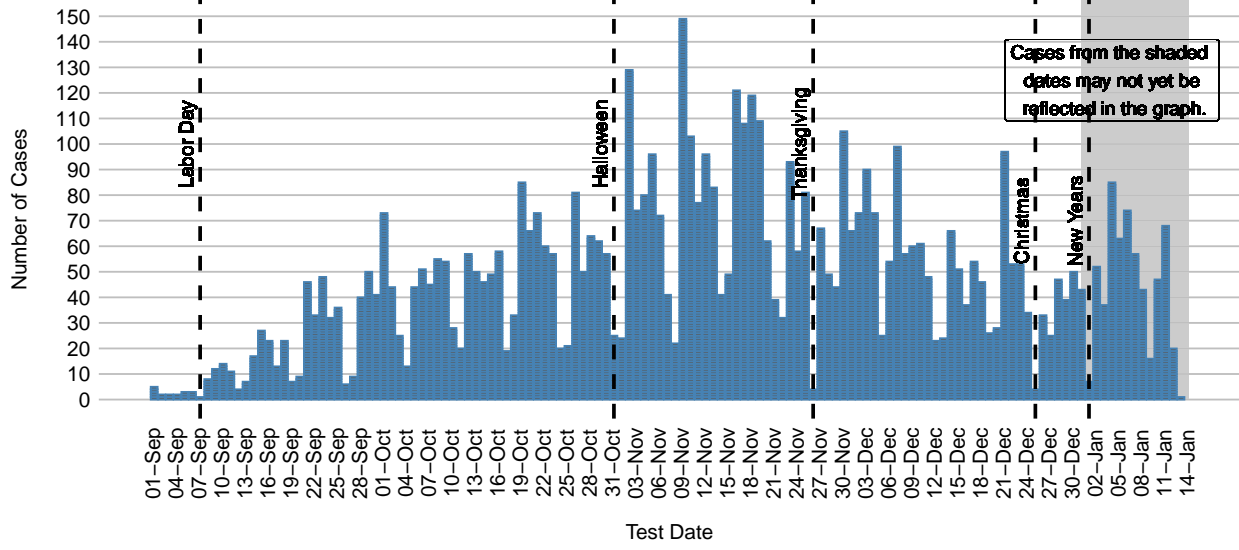


# COVID-19 incidence per week by age group

Missoula County, 2020. N = 2527 cases.

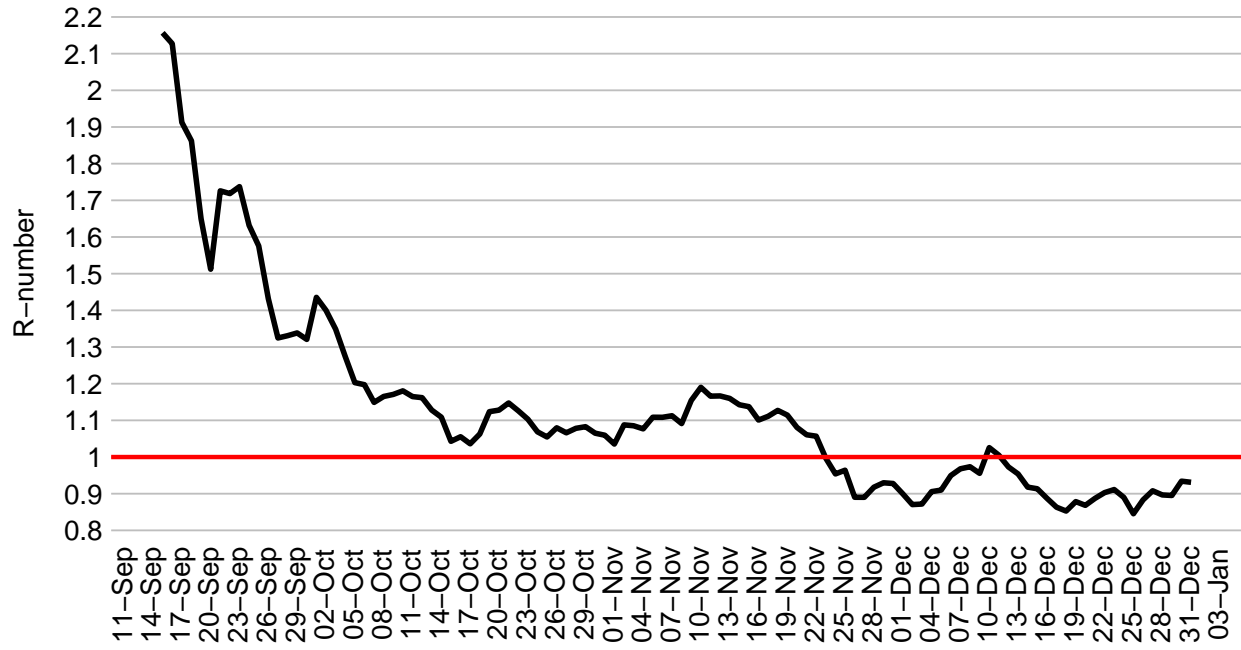


COVID-19 Cases in Missoula County Since September 1, 2020  
 Cases in plot = 6355





COVID-19 Rolling 14-day R-number, Missoula County



### COVID-19 Cases in Missoula County by Date, 2020

Total cases = 7079

