

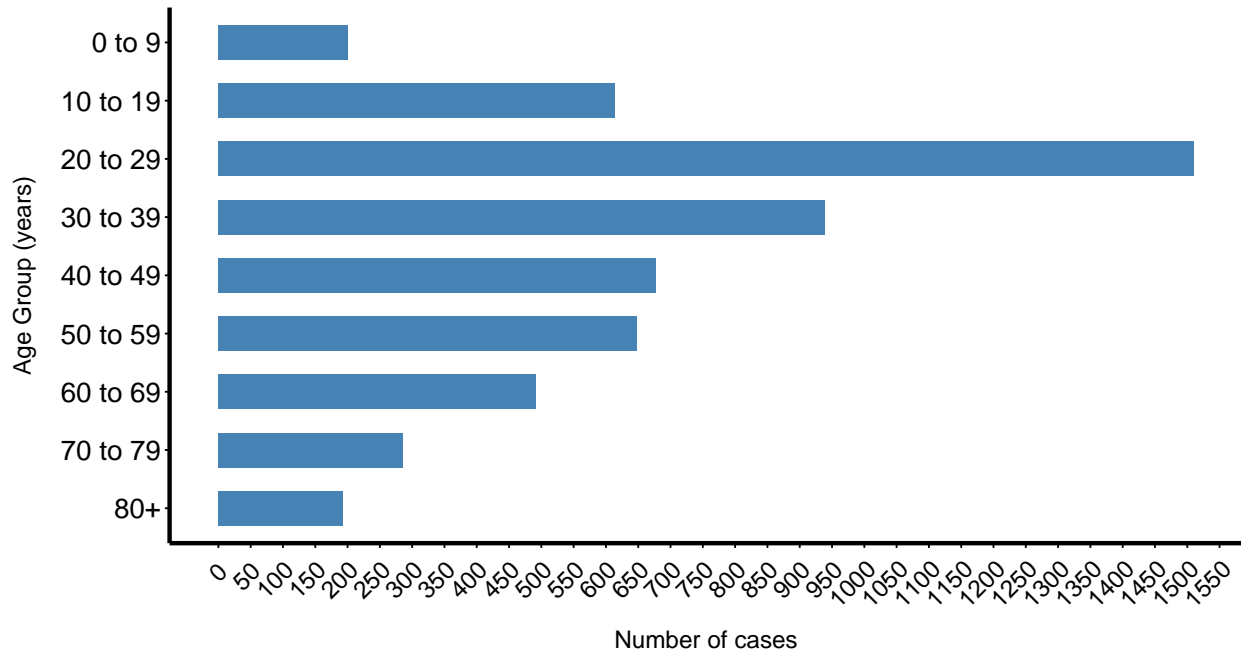
# Missoula County COVID-19 Cases

Ethan Walker, University of Montana

Data as of December 13, 2020

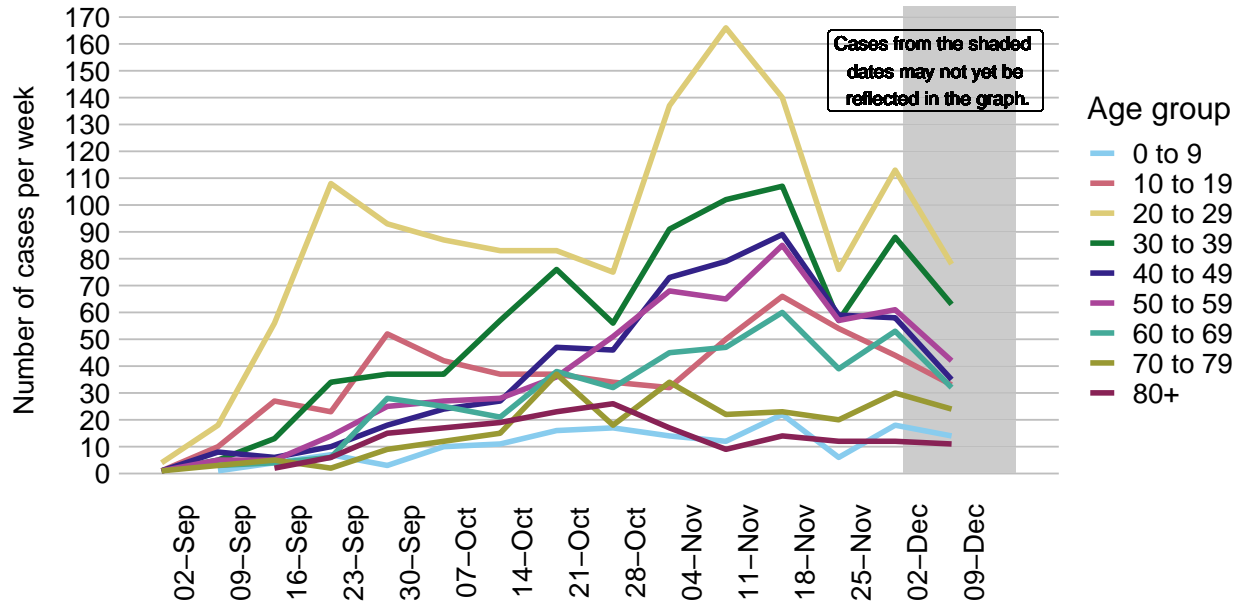
# COVID-19 Cases by age group

Missoula County, since March 2020. N = 5558 cases.

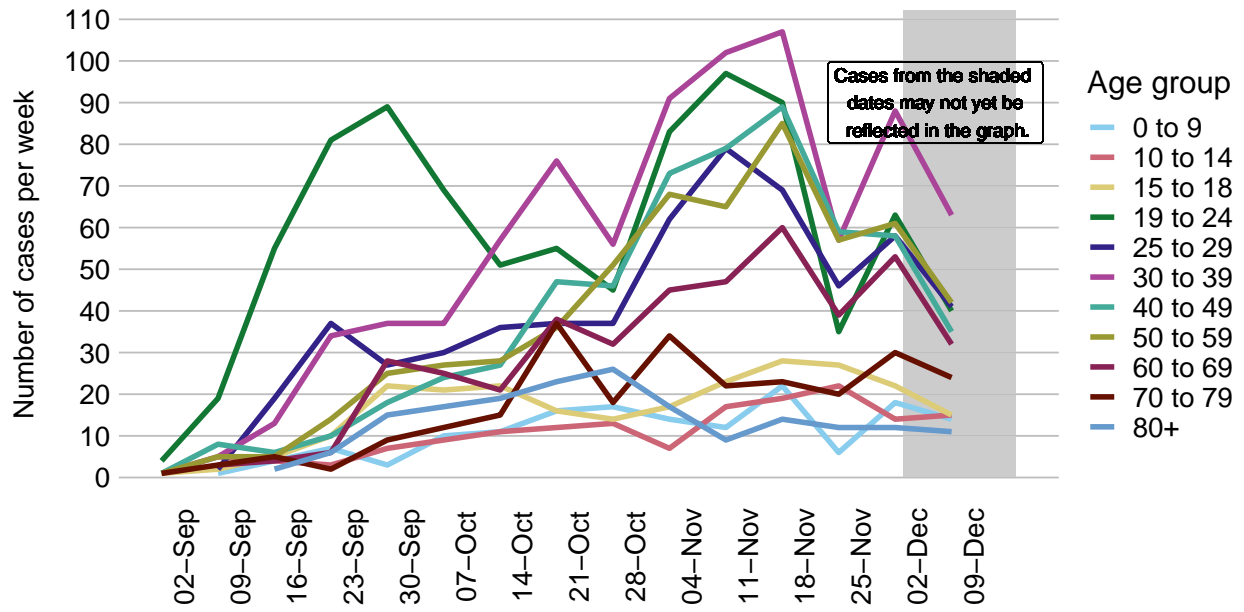


# Weekly COVID-19 cases by age group

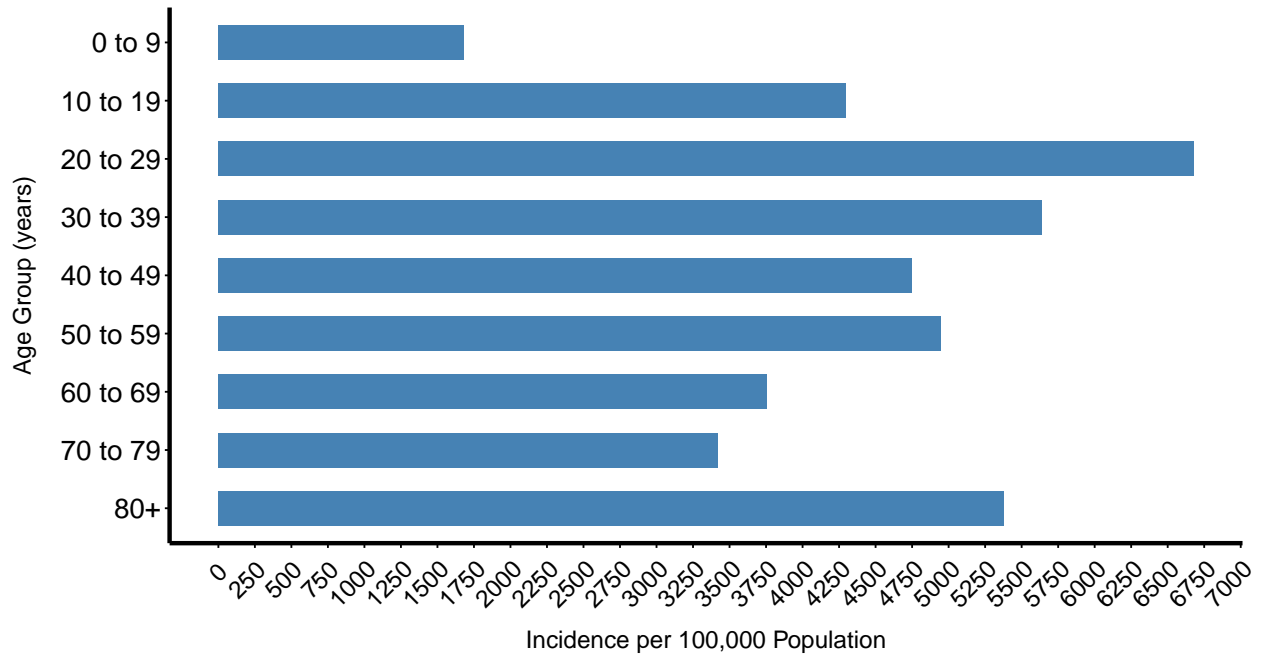
Missoula County, 2020. N = 4855 cases.



Weekly COVID-19 cases by age group  
 Missoula County, 2020. N = 4855 cases.

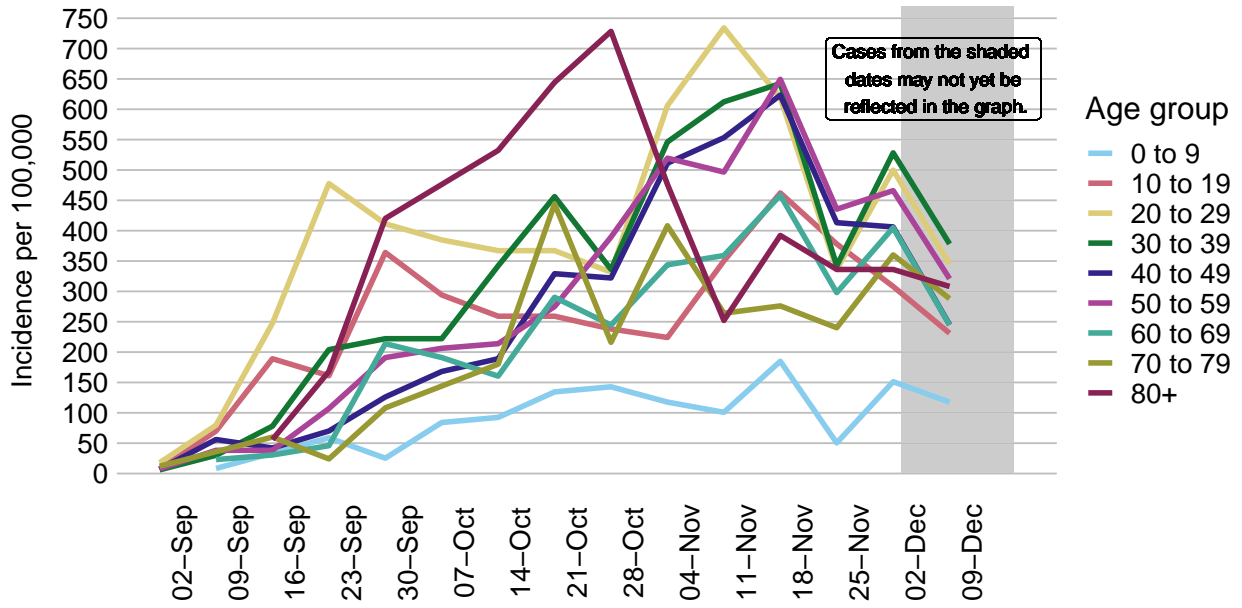


### COVID-19 incidence by age group Missoula County, since March 2020. N = 5558 cases.



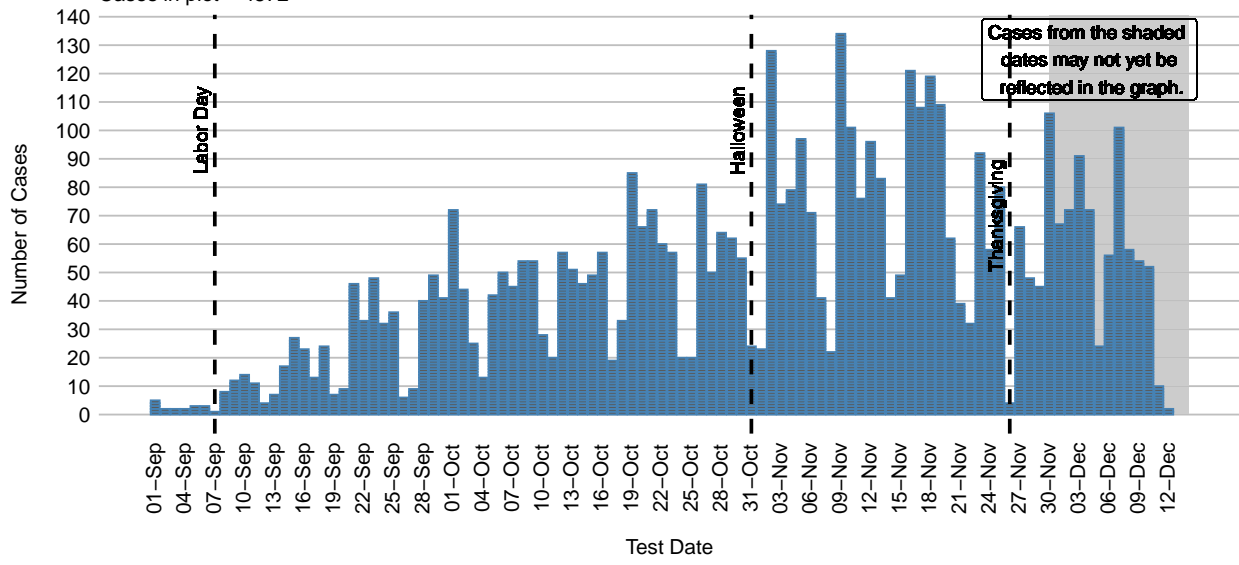
# COVID-19 incidence per week by age group

Missoula County, 2020. N = 4855 cases.

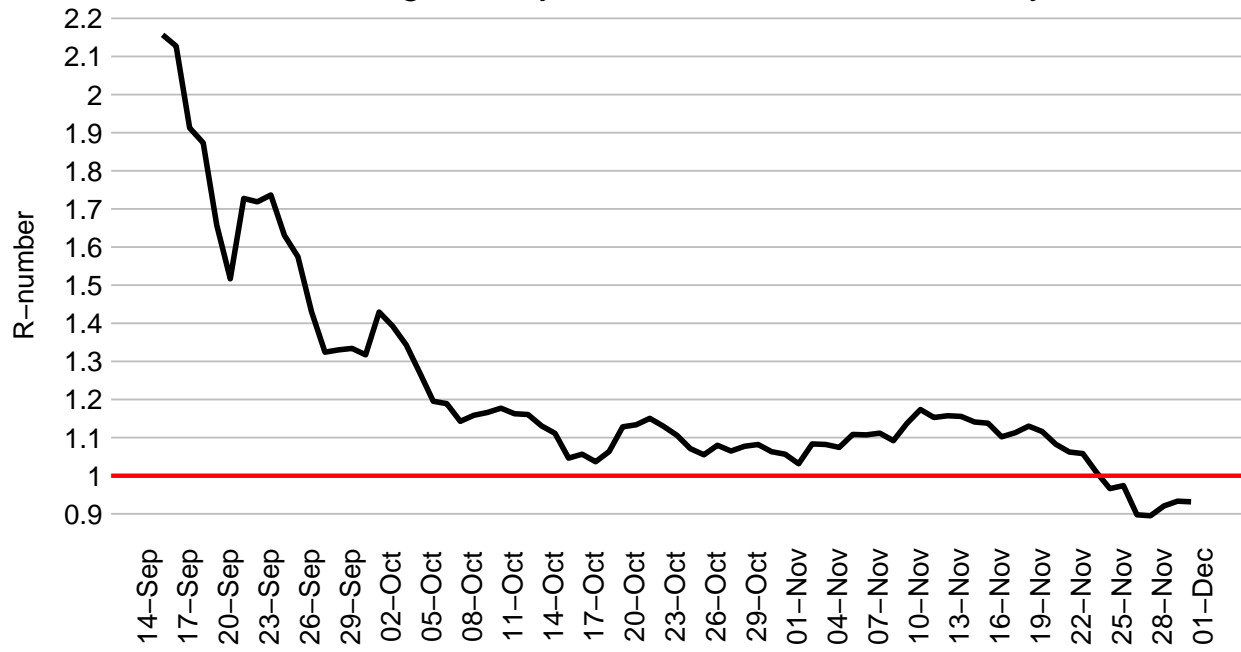


# COVID-19 Cases in Missoula County Since September 1, 2020

Cases in plot = 4872



COVID-19 Rolling 14-day R-number, Missoula County





COVID-19 Cases in Missoula County by Date, 2020

Total cases = 5571

