

Missoula County COVID-19 Report

Ethan Walker, University of Montana

Data as of October 15, 2020

Missoula County COVID-19 Cases

Data Category	Number of Cases	Proportion of Cases (%)	Incidence per 100,000 Population
All Cases			
Total	1407	100	1176.4
Age Group (Years)			
<18	135	10	600.4
18 to 64	1132	80	1442.8
65+	136	10	728.9
Gender			
Female	736	52	1233.2
Male	671	48	1119.8
Travel History			
Yes	445	32	NA
No	891	63	NA
Unknown	71	5	NA
Contact with Known Case			
Yes	817	58	NA
No	513	36	NA
Unknown	77	5	NA

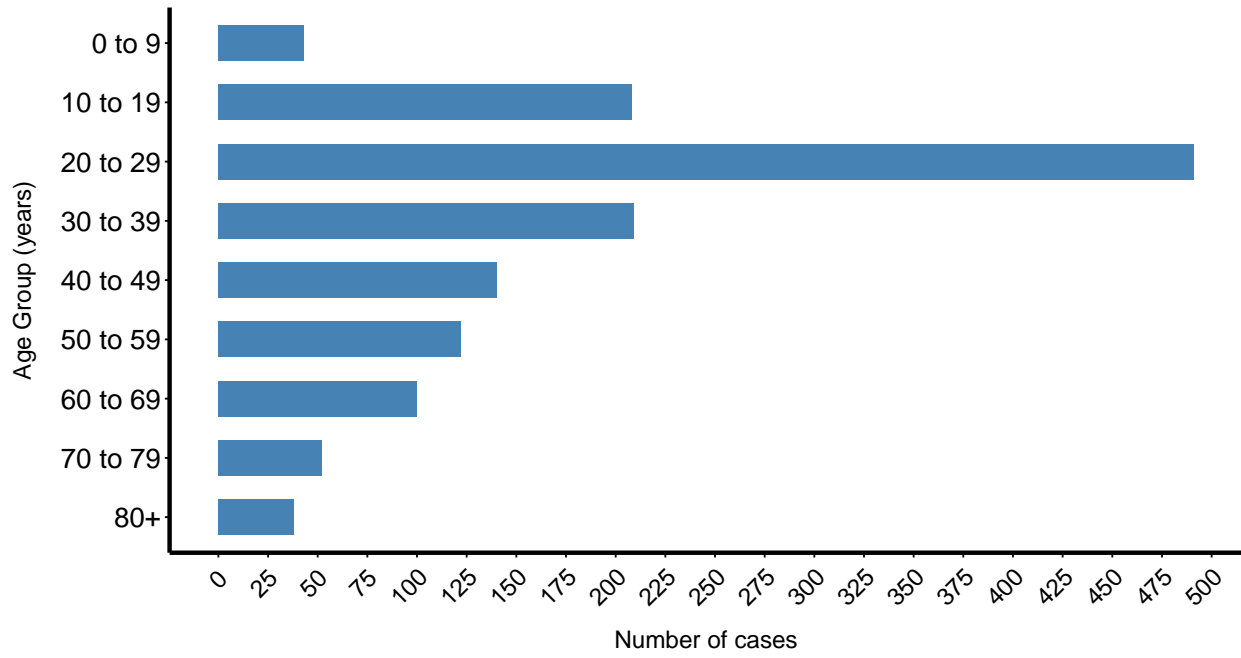
Note:

Travel History: case left Missoula County.

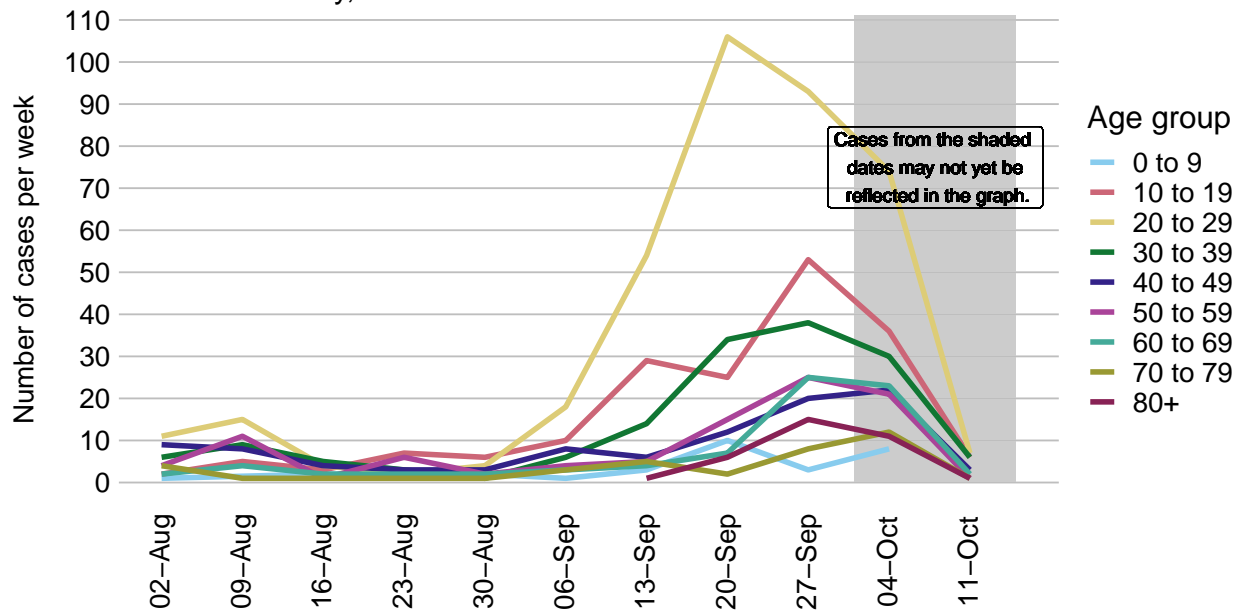
Data is still being collected. Percentages may not add to 100% in some cases.

COVID-19 Cases by age group

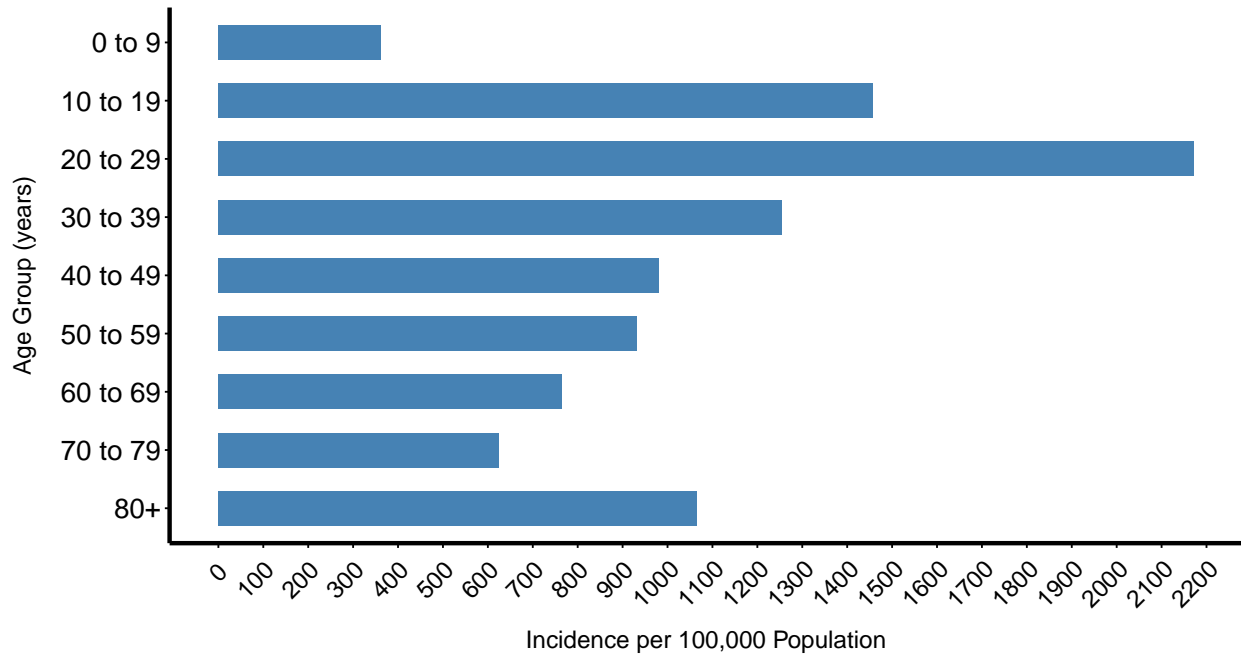
Missoula County, since March 2020. N = 1403 cases.



Weekly COVID-19 cases by age group
 Missoula County, 2020. N = 1390 cases.

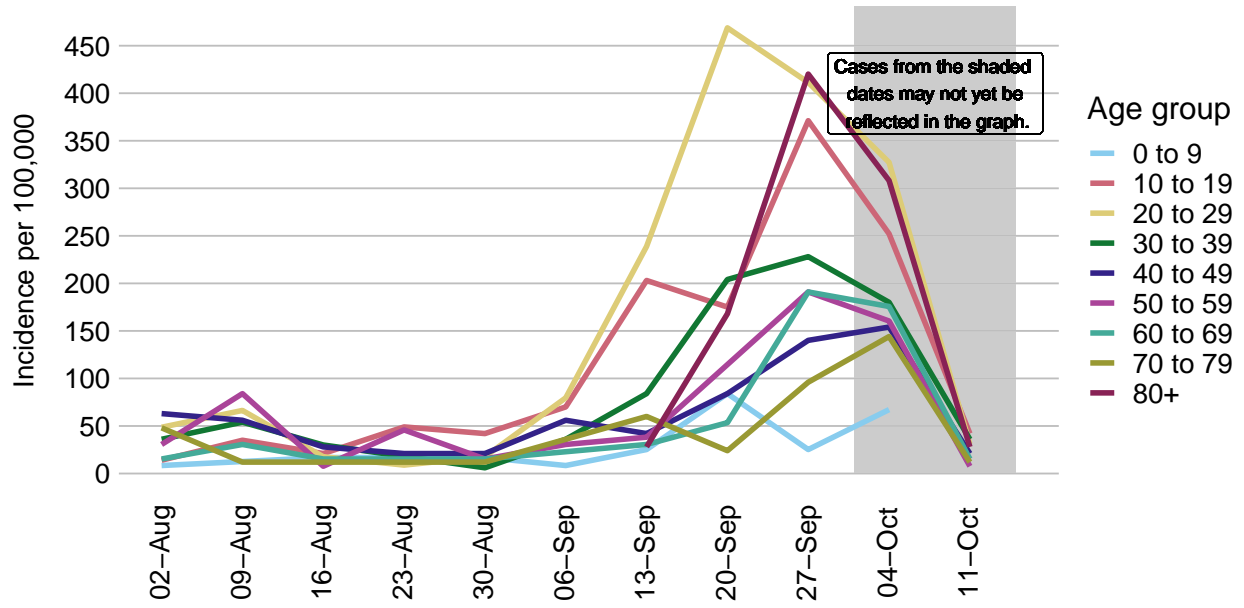


COVID-19 incidence by age group
Missoula County, since March 2020. N = 1403 cases.

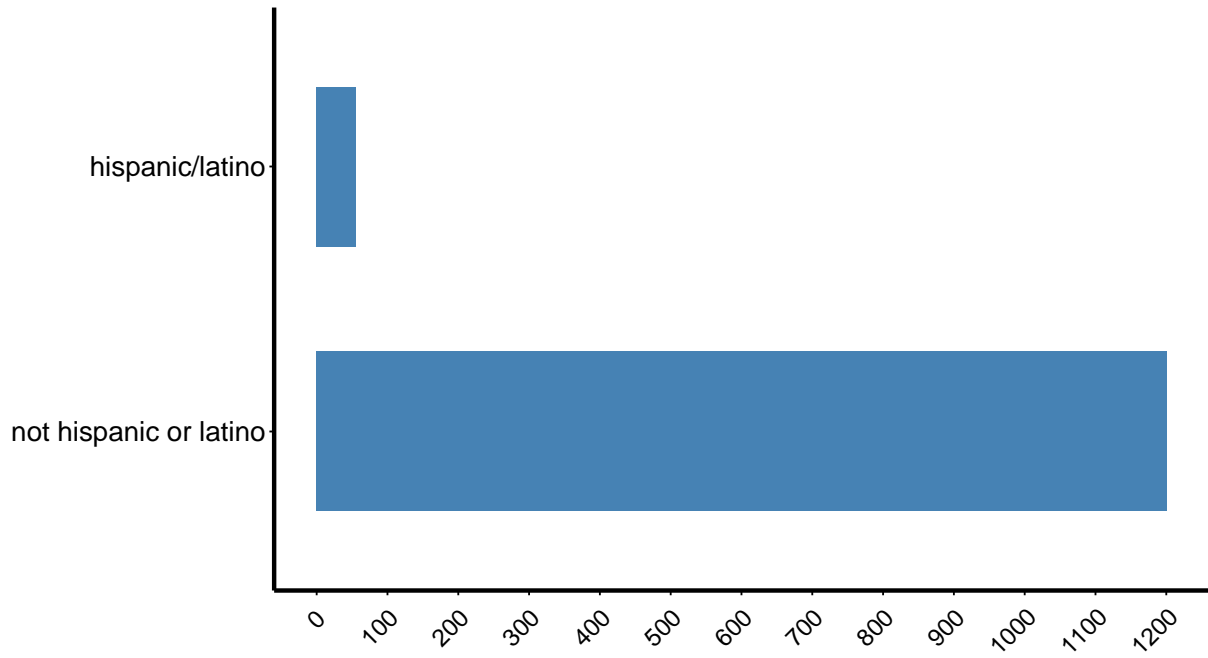


COVID-19 incidence per week by age group

Missoula County, 2020. N = 1390 cases.

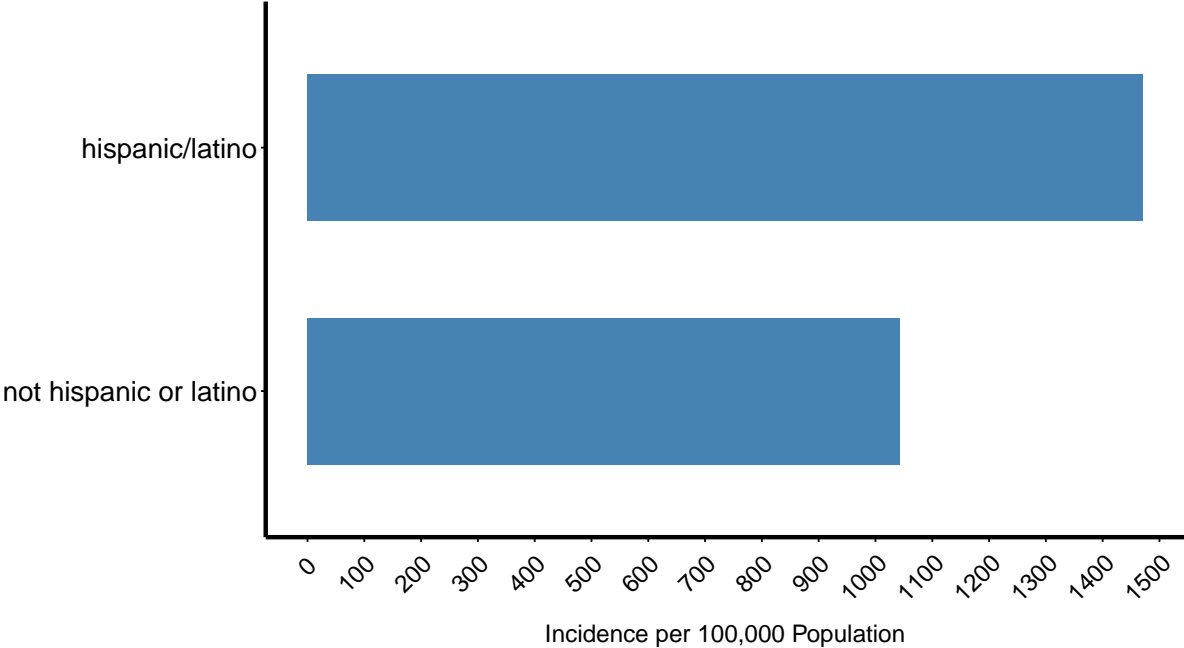


COVID-19 cases by self-reported ethnicity
Missoula County. N = 1257 cases.

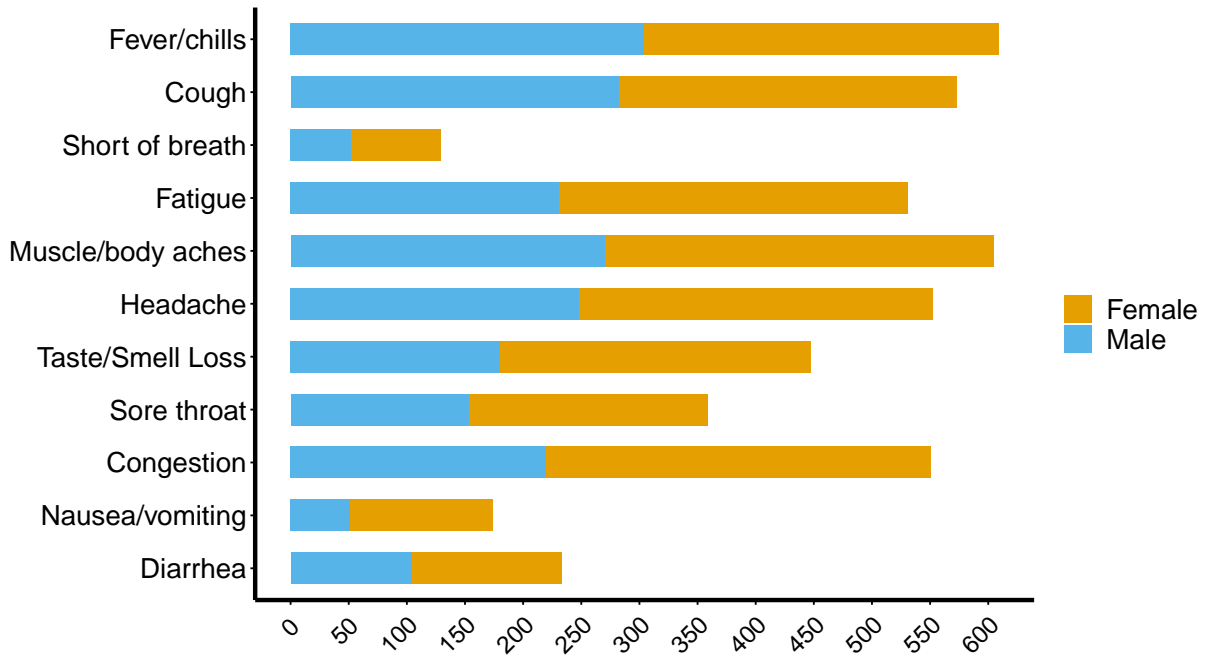


COVID-19 incidence by self-reported ethnicity

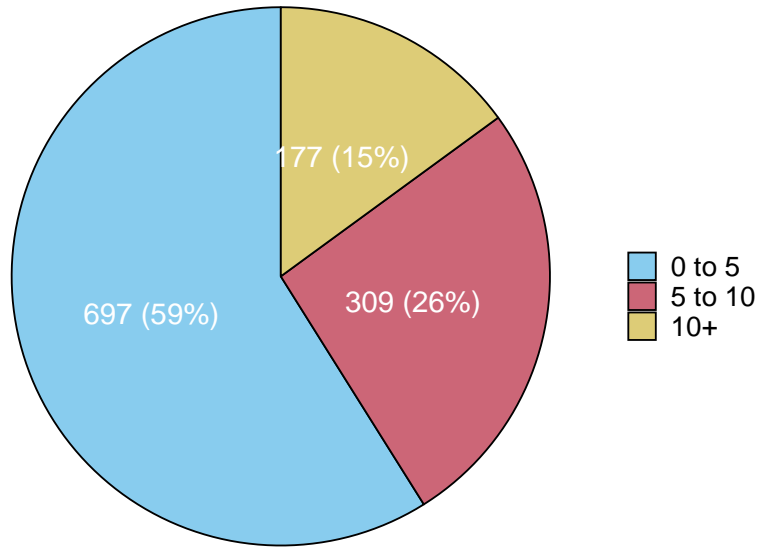
Missoula County. N = 1257 cases.



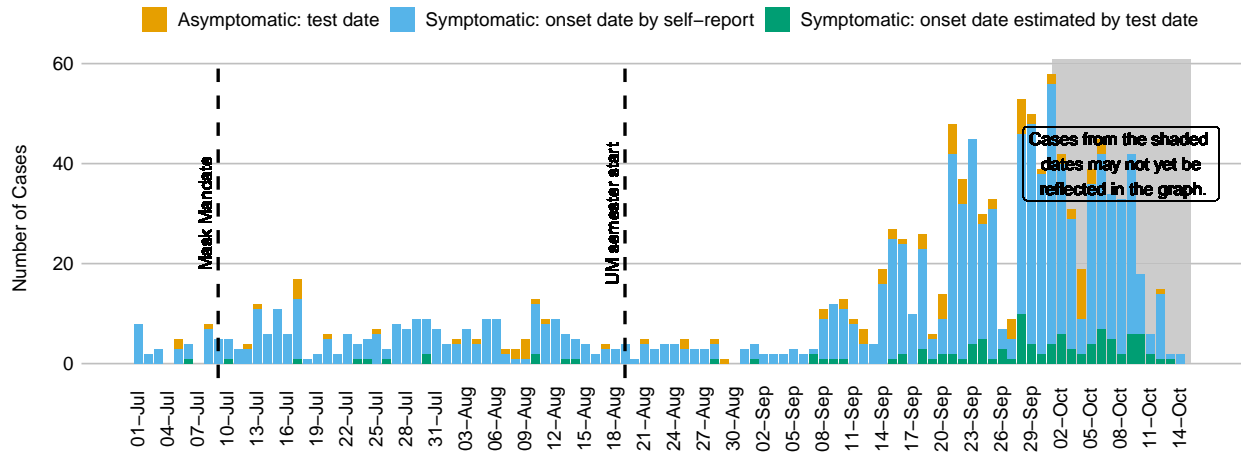
Symptoms reported at time of testing By gender, Missoula County, 2020



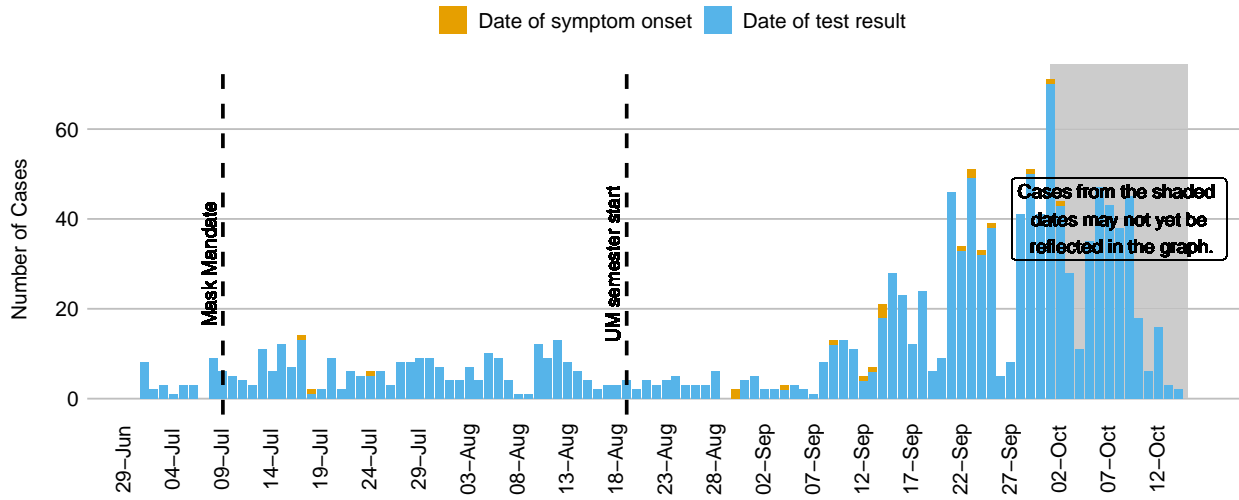
Missoula County COVID-19 cases
Number of contacts – all cases



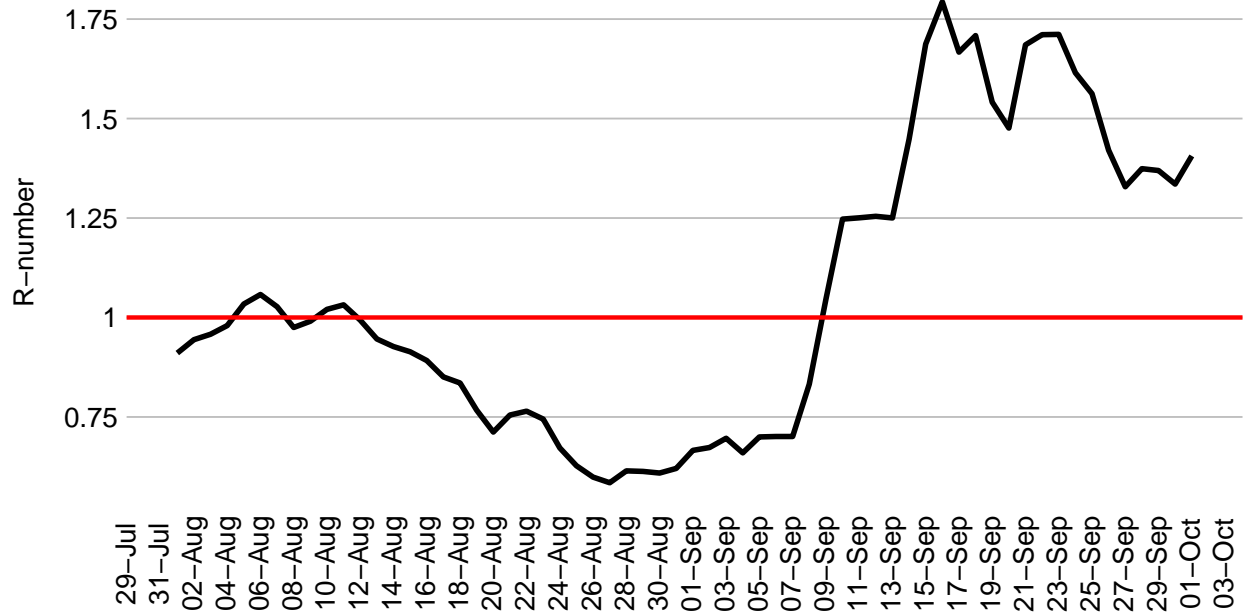
COVID-19 Cases in Missoula County Since July 1, 2020
 Cases in plot = 1259



COVID-19 Cases in Missoula County Since July 1, 2020
Cases in plot = 1280



COVID-19 Rolling 14-day R-number, Missoula County



COVID-19 Cases in Missoula County by Date, 2020

Total cases = 1407

