

Missoula County COVID-19 Report

Ethan Walker, University of Montana

Data as of October 19, 2020

Missoula County COVID-19 Cases

Data Category	Number of Cases	Proportion of Cases (%)	Incidence per 100,000 Population
All Cases			
Total	1612	100	1347.8
Age Group (Years)			
<18	160	10	711.6
18 to 64	1285	80	1637.8
65+	164	10	879
Gender			
Female	848	53	1420.9
Male	764	47	1275
Travel History			
Yes	494	31	NA
No	1017	63	NA
Unknown	101	6	NA
Contact with Known Case			
Yes	923	57	NA
No	583	36	NA
Unknown	106	7	NA

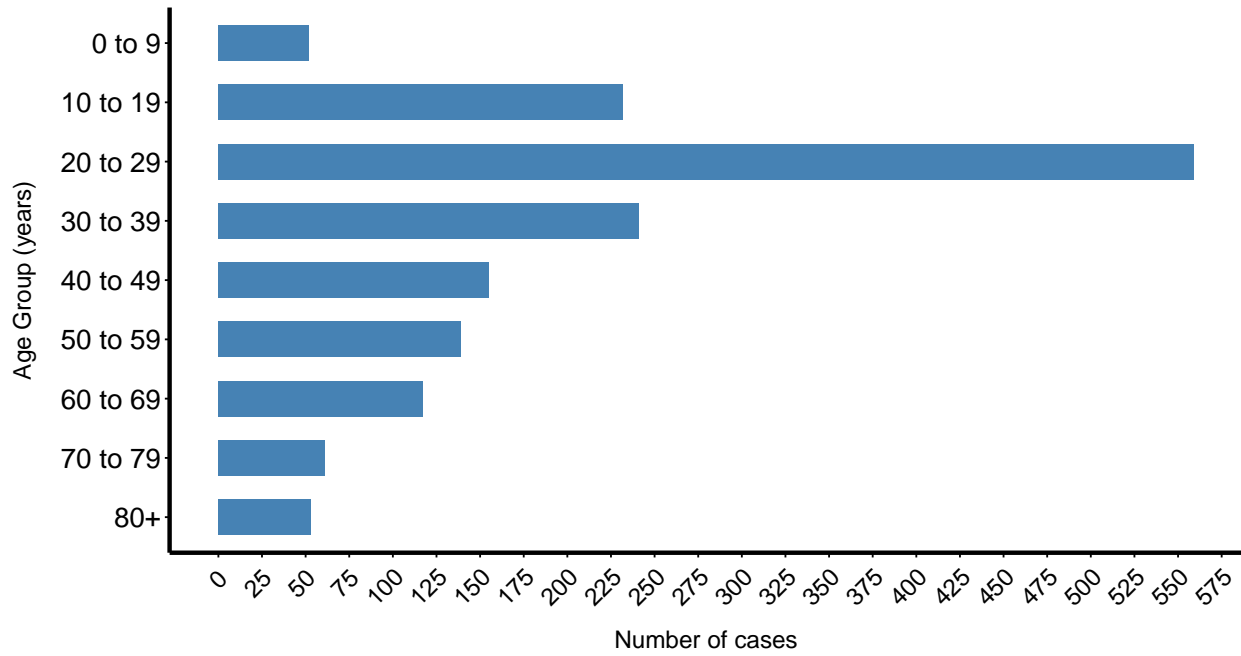
Note:

Travel History: case left Missoula County.

Data is still being collected. Percentages may not add to 100% in some cases.

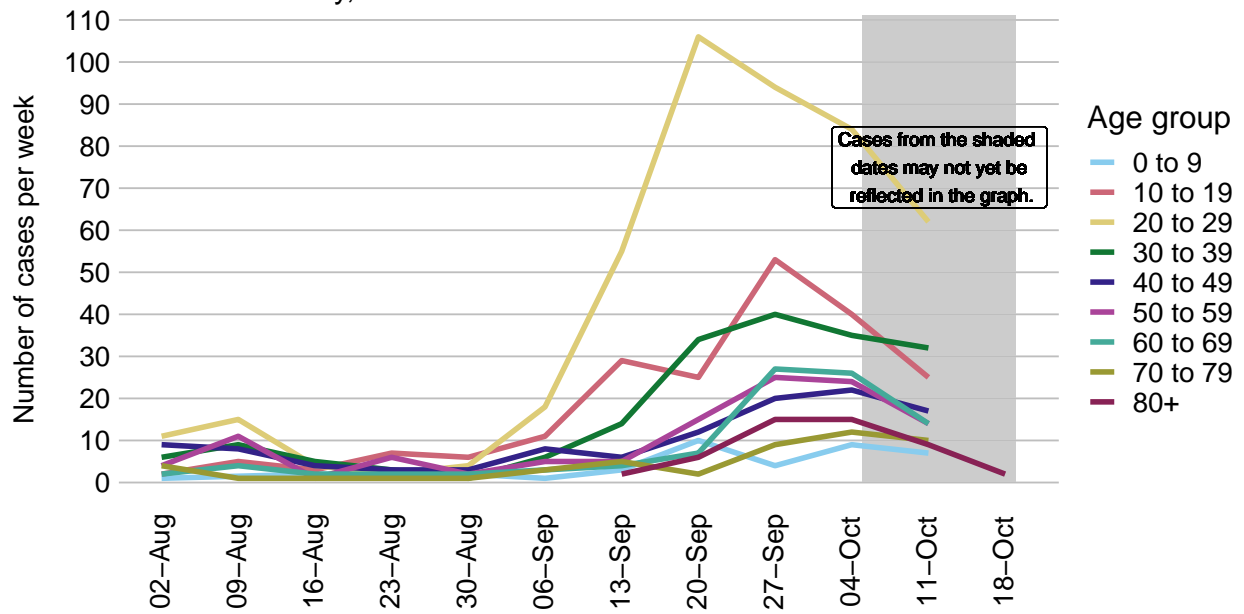
COVID-19 Cases by age group

Missoula County, since March 2020. N = 1609 cases.

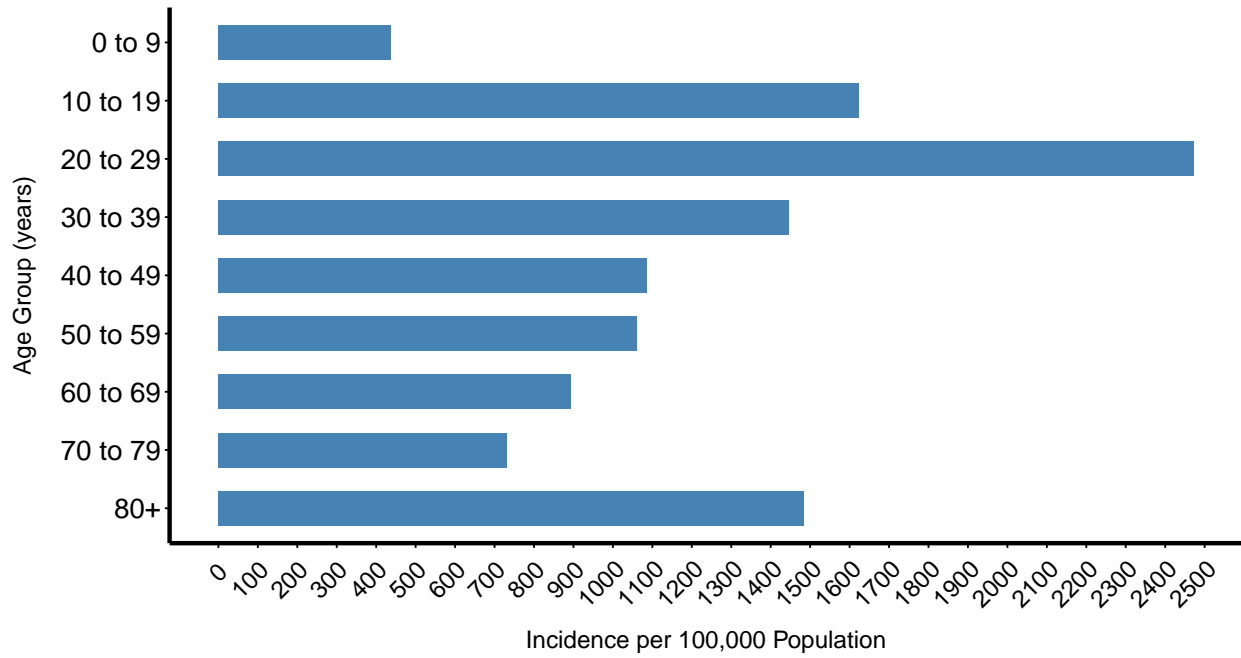


Weekly COVID-19 cases by age group

Missoula County, 2020. N = 1596 cases.

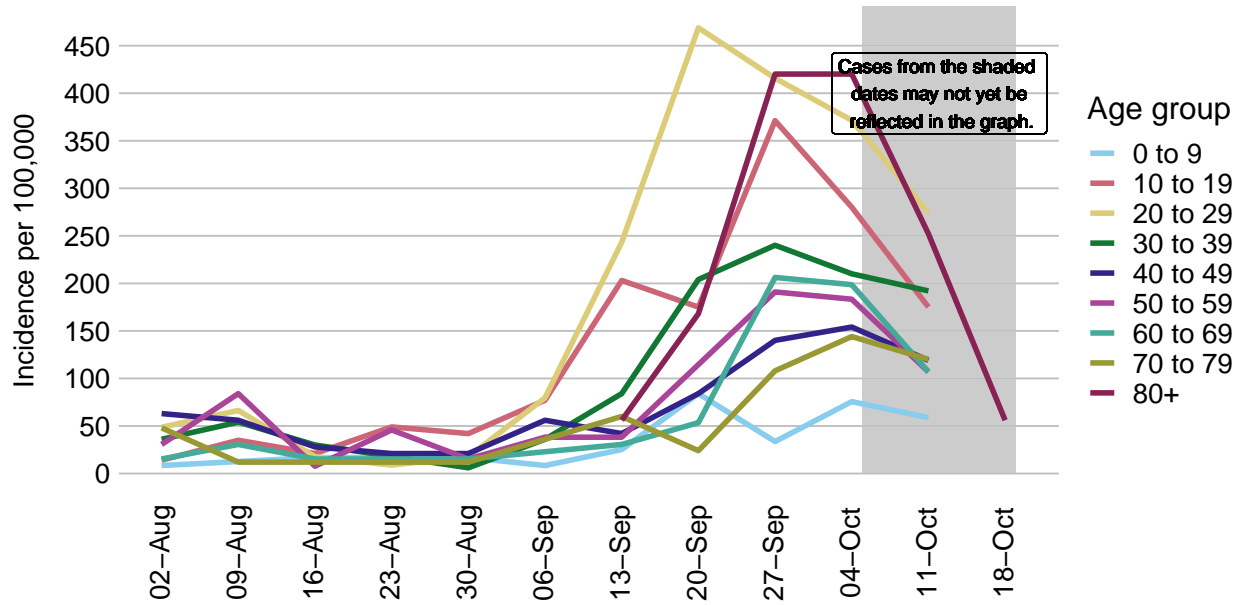


COVID-19 incidence by age group
Missoula County, since March 2020. N = 1609 cases.

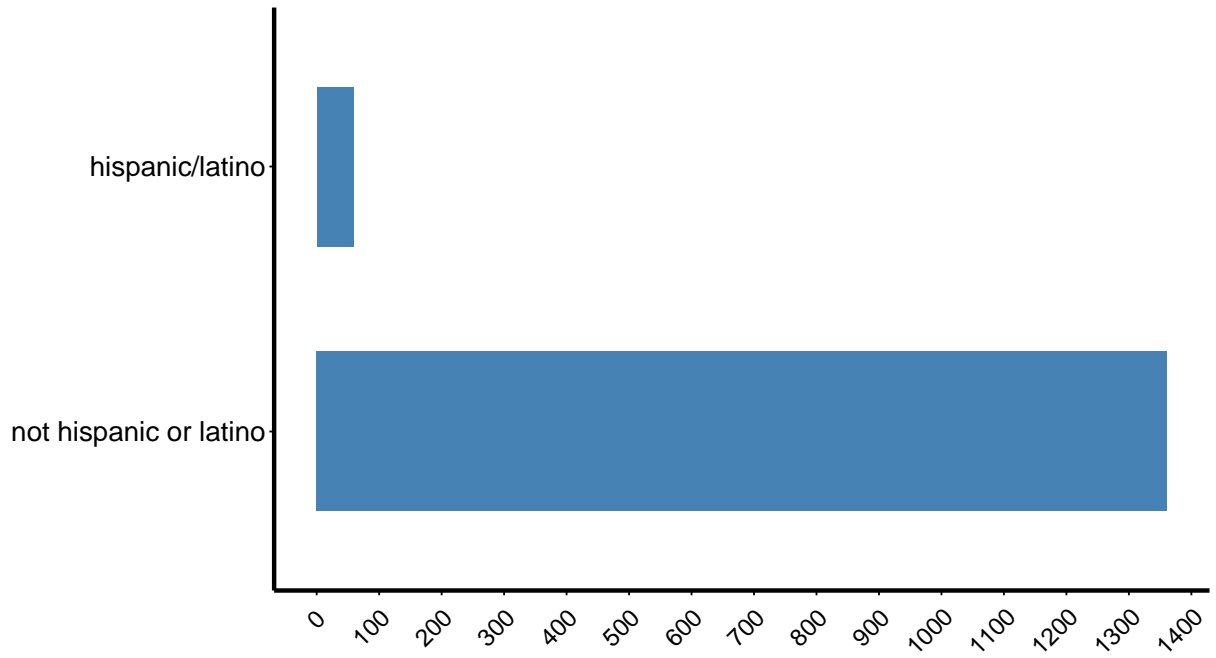


COVID-19 incidence per week by age group

Missoula County, 2020. N = 1596 cases.

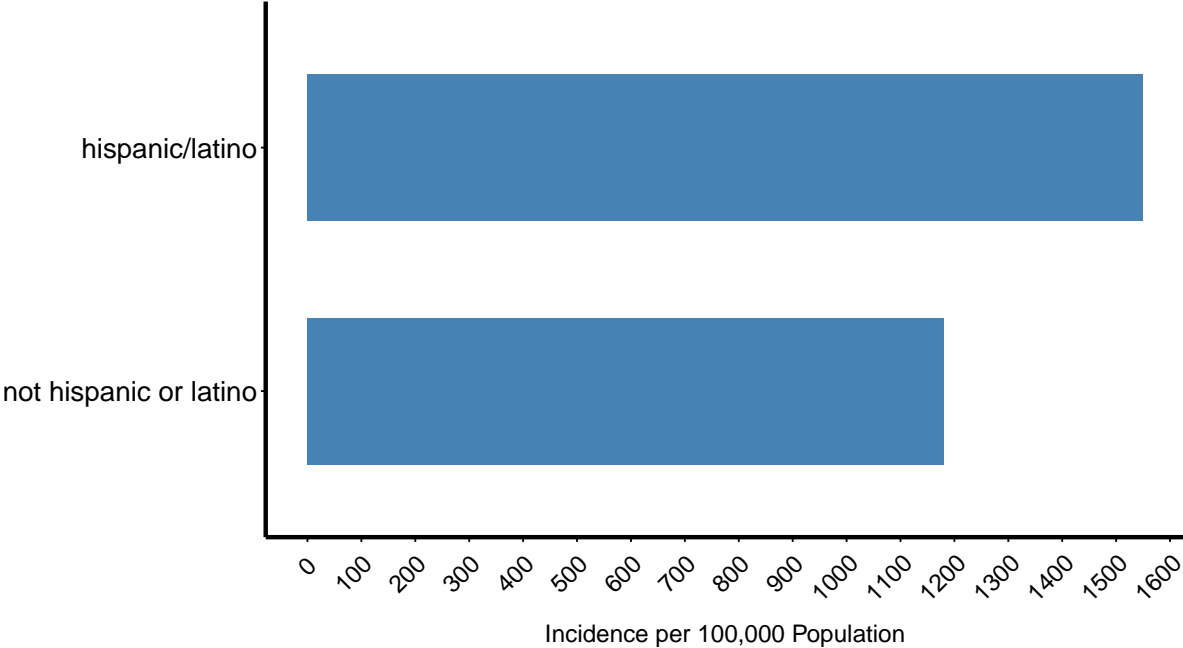


COVID-19 cases by self-reported ethnicity
Missoula County. N = 1420 cases.



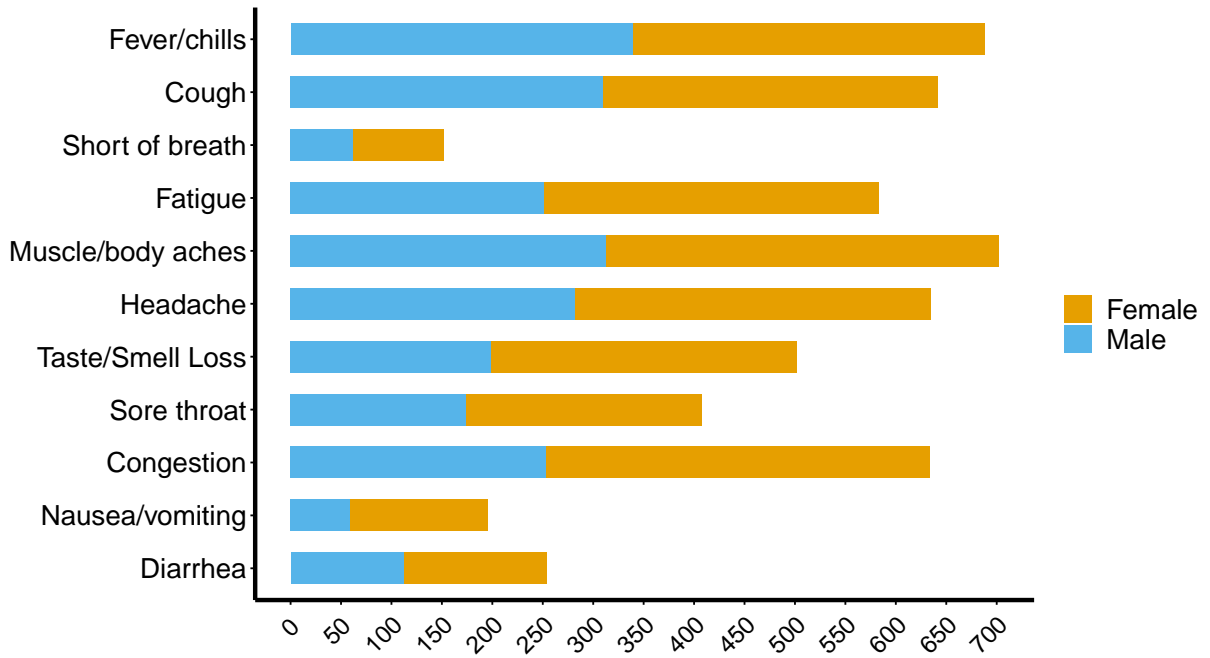
COVID-19 incidence by self-reported ethnicity

Missoula County. N = 1420 cases.

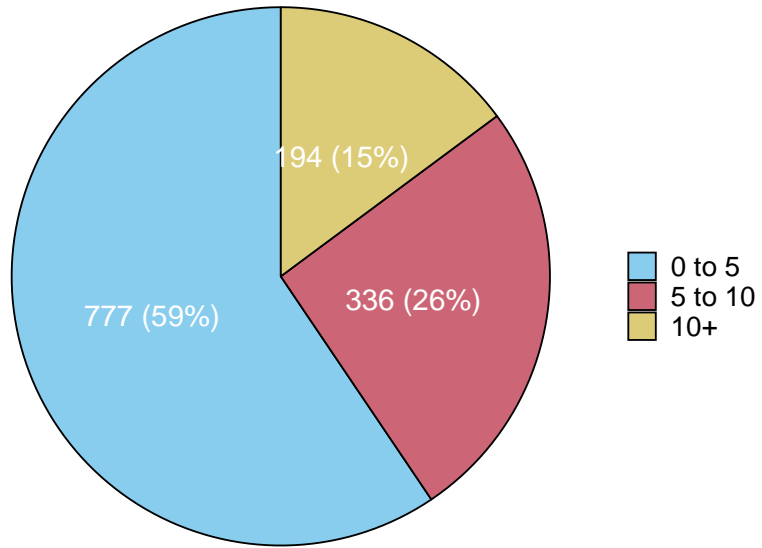


Symptoms reported at time of testing

By gender, Missoula County, 2020

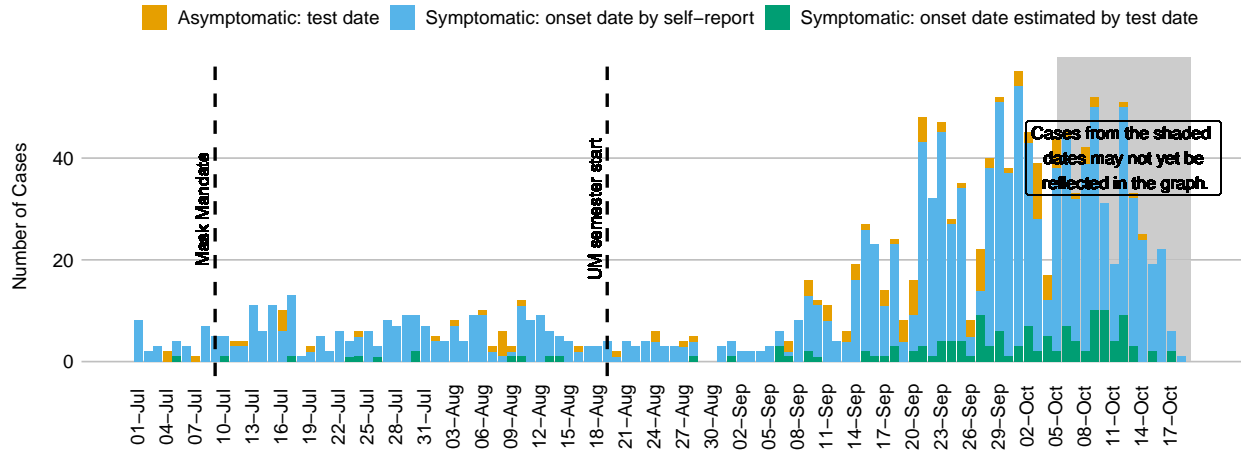


Missoula County COVID-19 cases
Number of contacts – all cases

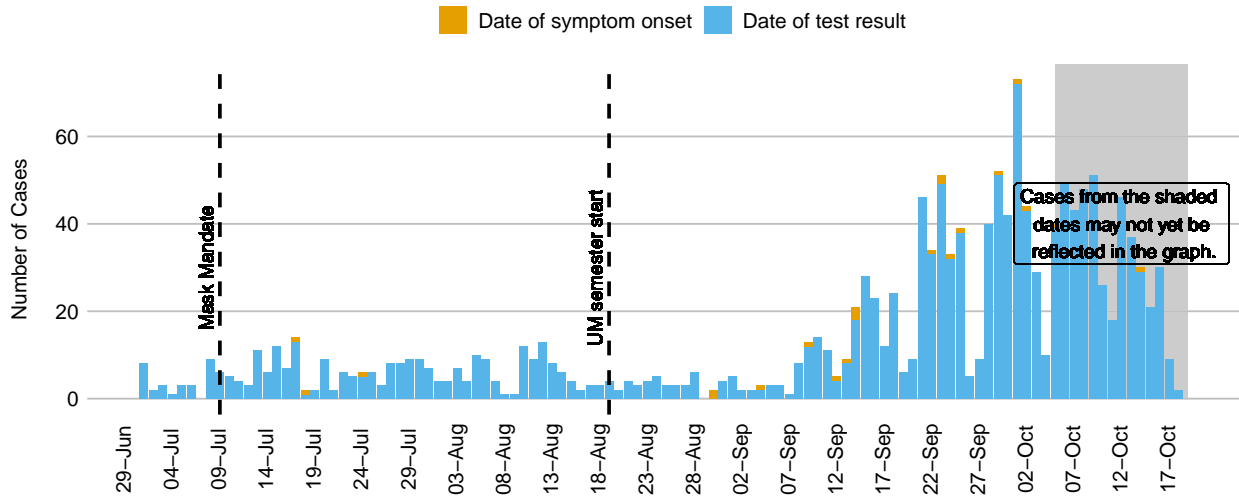


COVID-19 Cases in Missoula County Since July 1, 2020

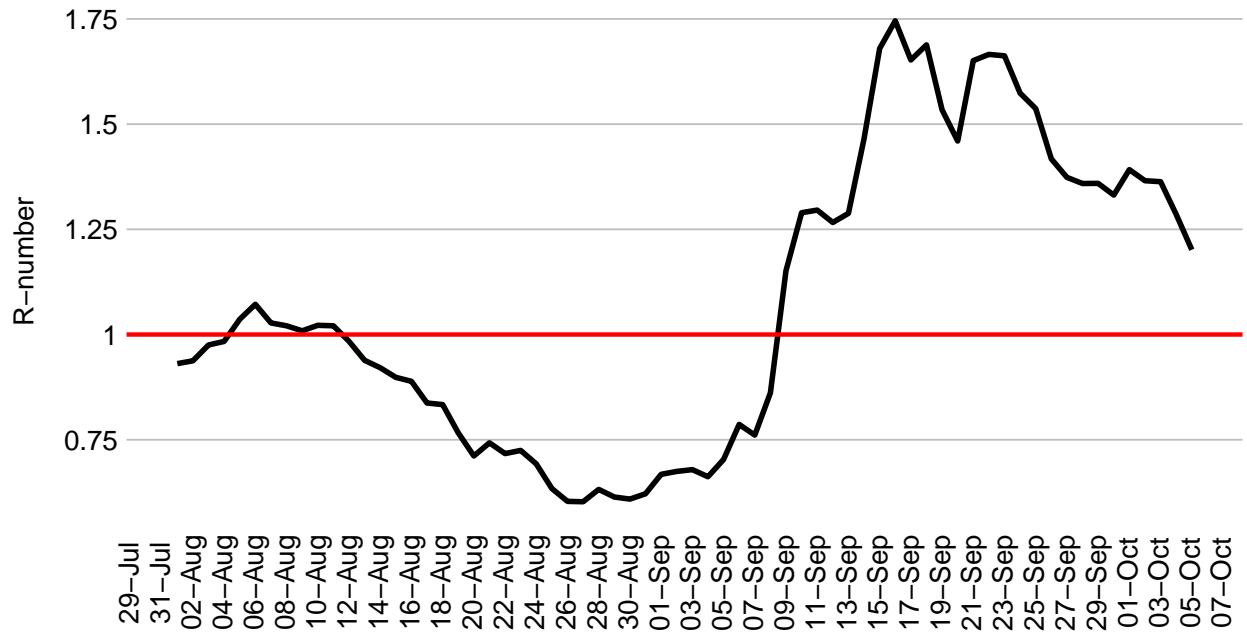
Cases in plot = 1463



COVID-19 Cases in Missoula County Since July 1, 2020
 Cases in plot = 1485



COVID-19 Rolling 14-day R-number, Missoula County



COVID-19 Cases in Missoula County by Date, 2020

Total cases = 1612

