

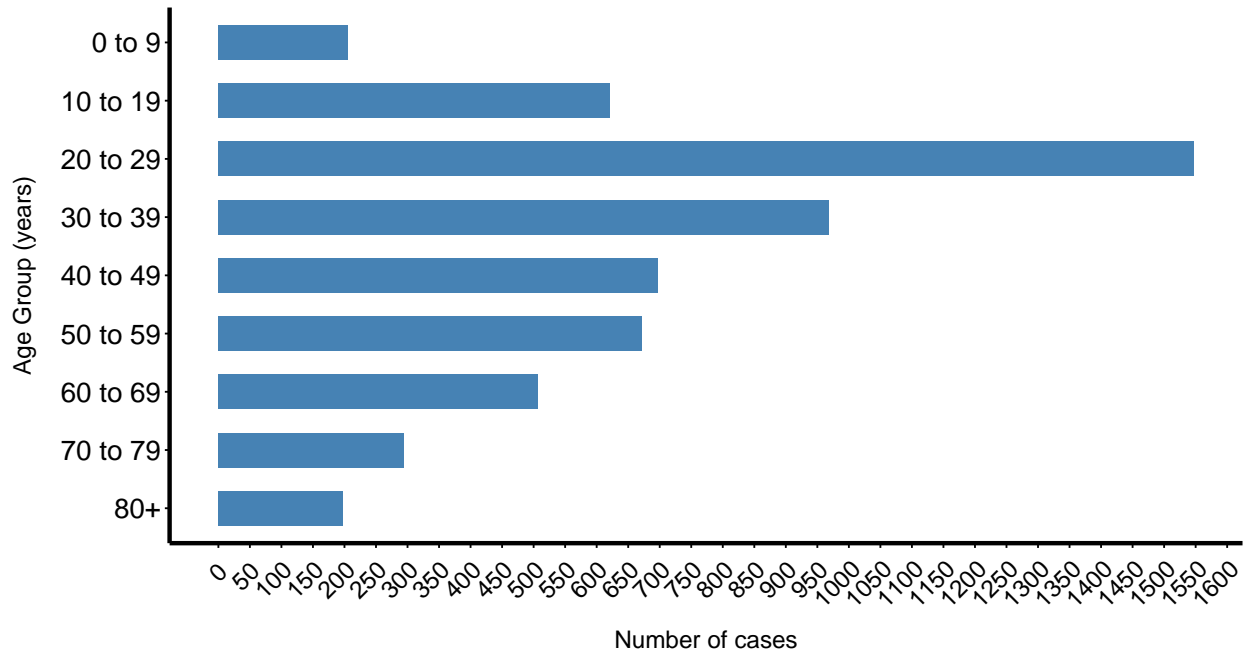
Missoula County COVID-19 Cases

Ethan Walker, University of Montana

Data as of December 17, 2020

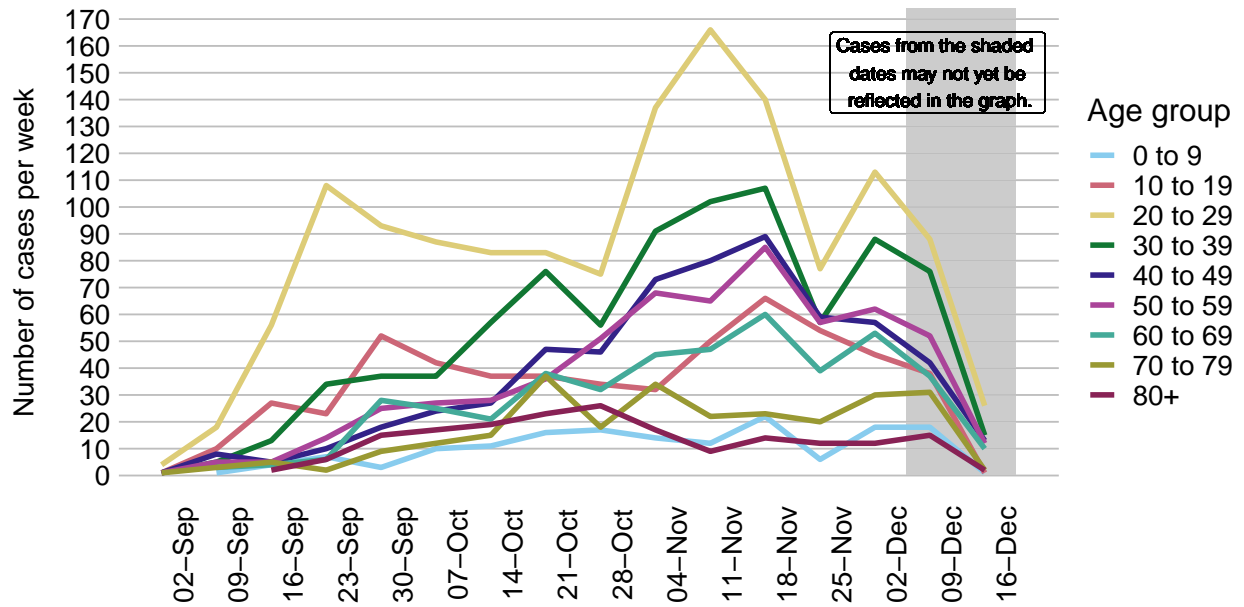
COVID-19 Cases by age group

Missoula County, since March 2020. N = 5708 cases.

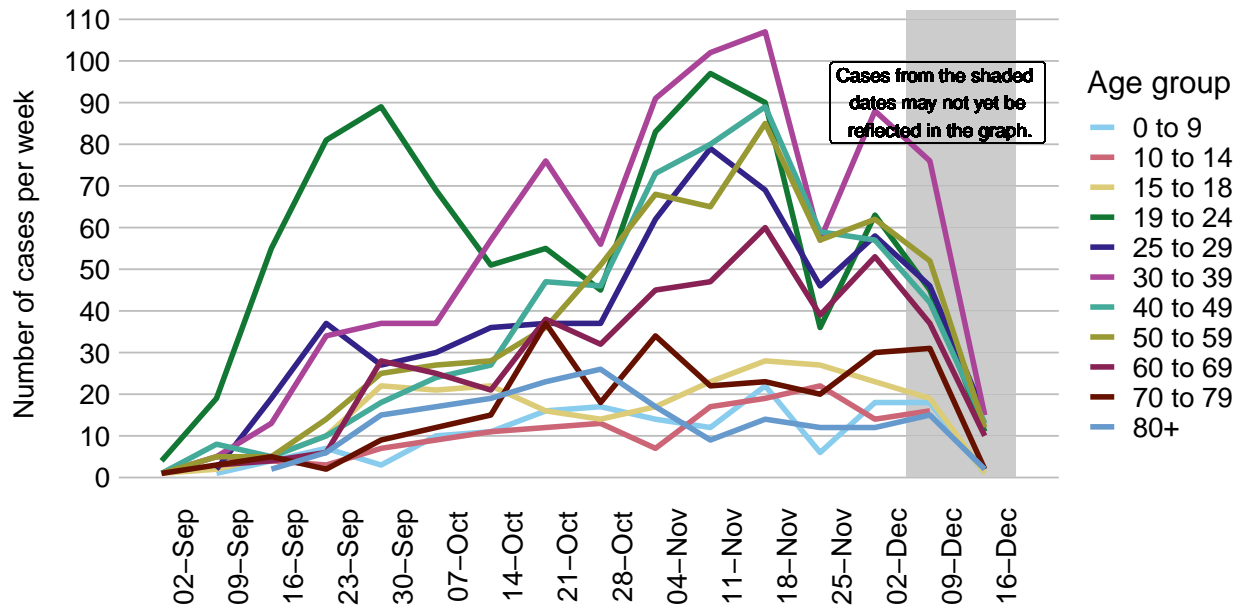


Weekly COVID-19 cases by age group

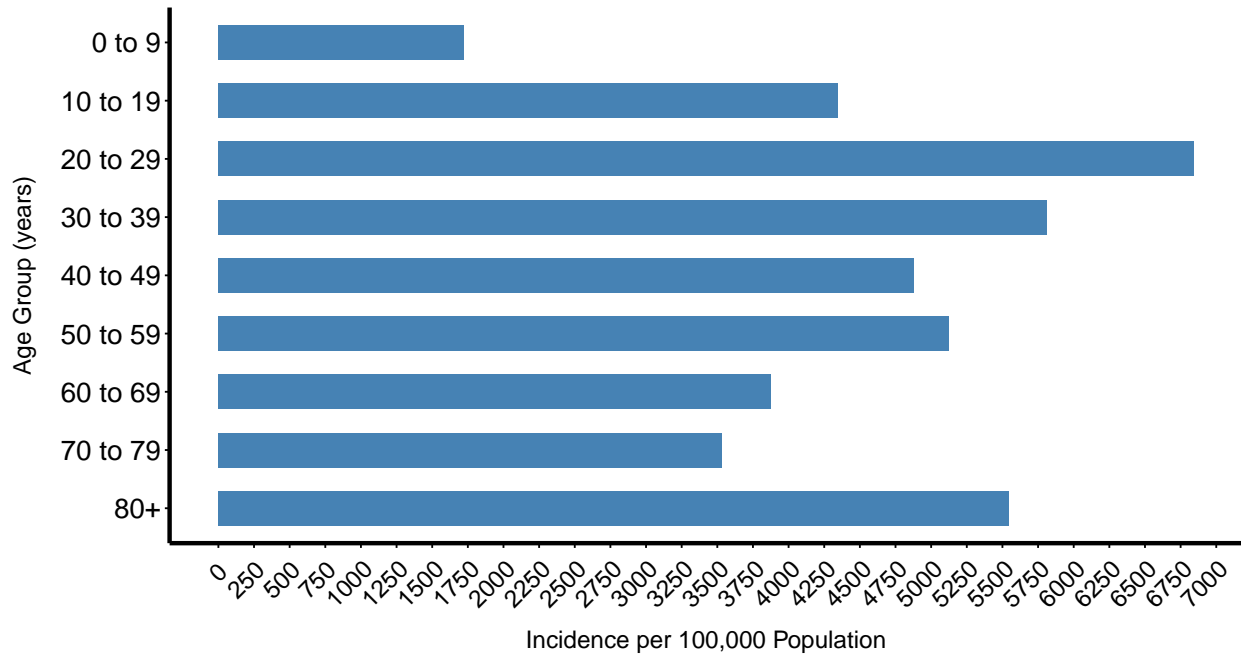
Missoula County, 2020. N = 5004 cases.



Weekly COVID-19 cases by age group
 Missoula County, 2020. N = 5004 cases.

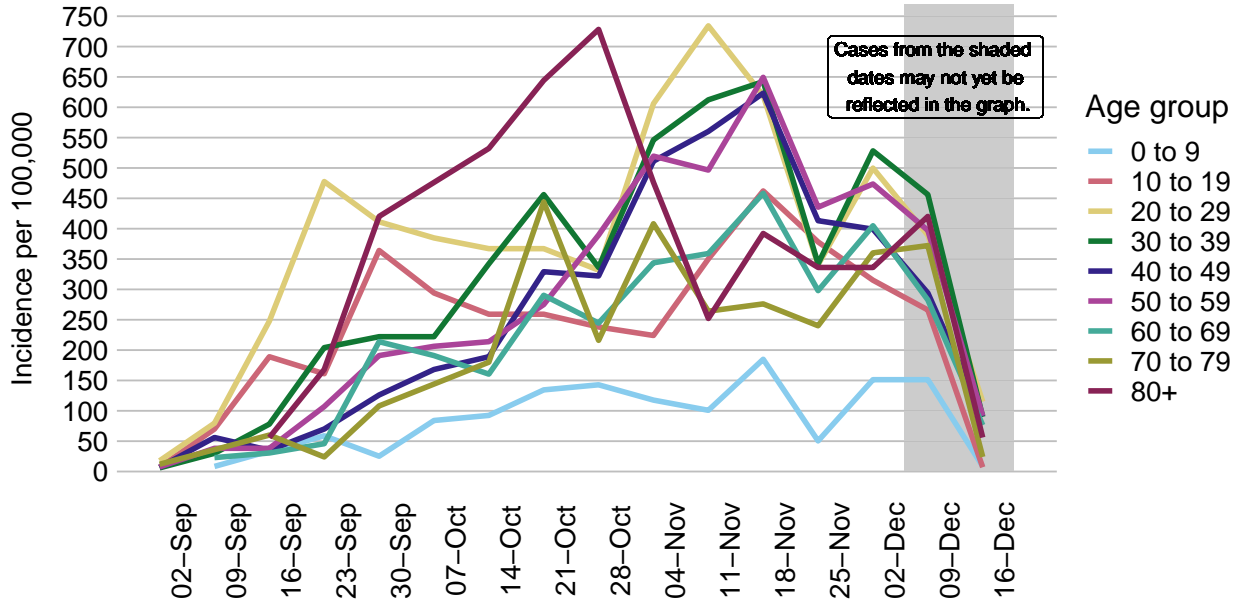


COVID-19 incidence by age group Missoula County, since March 2020. N = 5708 cases.



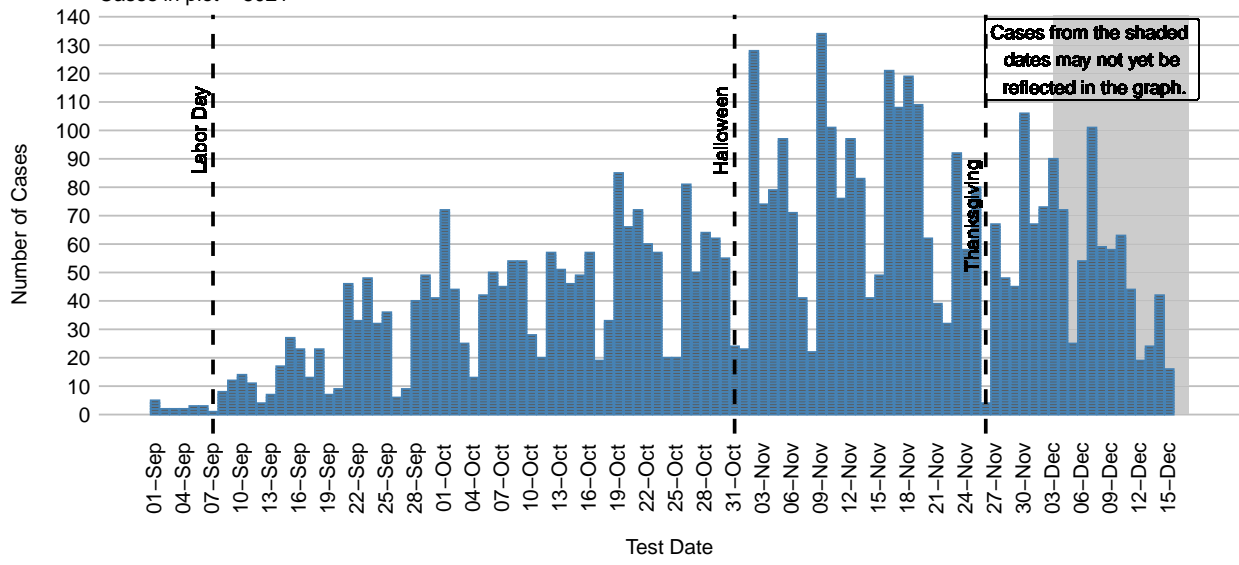
COVID-19 incidence per week by age group

Missoula County, 2020. N = 5004 cases.

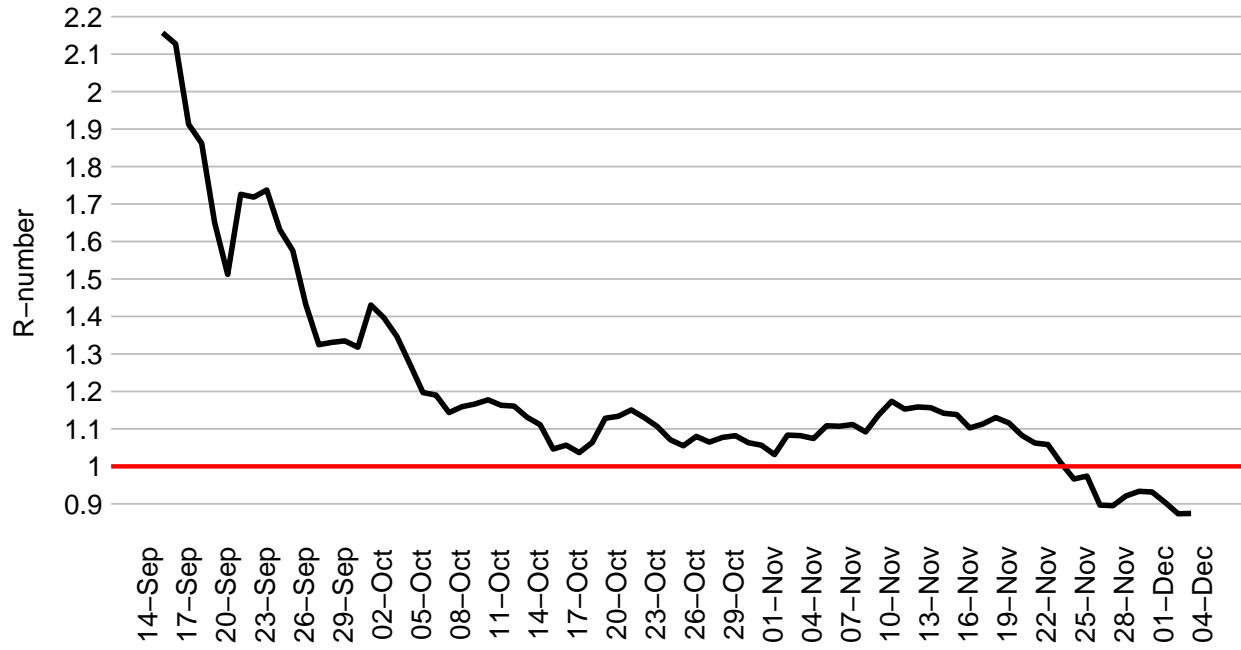


COVID-19 Cases in Missoula County Since September 1, 2020

Cases in plot = 5021



COVID-19 Rolling 14-day R-number, Missoula County



COVID-19 Cases in Missoula County by Date, 2020

Total cases = 5721

